



# Product Catalogue

UREA POLYURETHANE EPOXY MS POLYMER POLYUREA POLYURETHANE EPOX  
UREA POLYURETHANE EPOXY MS POLYMER POLYUREA POLYURETHANE EPOX

# About Us

An Alkatsan A.Ş brand, Suffix was established in 2016 in İzmir. Offering a wide range of high performance coating materials for industrial applications since its establishment, Suffix earned itself an important place in the high performance coating materials industry.

Alkatsan A.Ş utilizes its extensive experience and partnership approach with the companies it sets out with to become the solution partner its partners need.

Providing diverse system offerings based on changing environmental conditions, the Suffix brand is an important part of the various operations of international companies.

Diversifying its new and special product portfolio day by day with its innovative approach, Suffix is a trademark of Caran Group companies in the field of high performance coating materials. Alkatsan A.Ş will continue to grow and serve you with its wide range of insulation plans, new projects, products and growing business volume.



Phone: +90 232 461 5713

[www.suffix.com.tr](http://www.suffix.com.tr)

[info@suffix.com.tr](mailto:info@suffix.com.tr)

Alkatsan Yapı Sanayi ve Ticaret Anonim Şirketi Kazım Dirik Mh. 375  
Sk. No:18 K.2 D.2 Piramit İş Merkezi Bornova/İZMİR





---

**IMPORTANCE OF SURFACE PREPARATION  
AND KNOW-HOW IN APPLICATION**

---

## **IMPORTANCE OF SURFACE PREPARATION AND KNOW-HOW IN APPLICATION**

In the waterproofing and surface coating applications, due care should be paid to the points to be considered and surface preparation when using the products. In the applications; it should be ensured that workmanship is meticulously provided, know-how of the products to be used is fully understood, and if necessary, a pilot test is performed. The longest period of time should be allocated to this stage. It cannot be possible for the material to be applied on a poor surface preparation with lack of full competence of the product information to provide the desired performance. In this regard, the necessary actions to be taken for the application surfaces in our projects, are separated into two main groups;

1. The points to take into consideration for the product;
2. Surface preparation,

### **THE POINTS TO TAKE INTO CONSIDERATION FOR THE PRODUCT;**

1. Application should not be carried out in extremely hot, rainy or windy weather or if the ambient and surface temperatures are below +5°C or above 35°C.
2. Ensure that the ambient and surface temperatures are increased by using heaters for applications in extremely cold weather, and the packages should be made ready for use by conditioning at 23°C ± 3°C in order to increase the workability level of the material.
3. The epoxy / polyurethane / polyurea should be stirred by using a 300 - 400 rev/min mechanical mixer.
4. Never mix the product by hand.
5. Never add any solvent etc. into the mixture without the necessary technical support during the application. Epoxy / polyurethane / polyurea-based floor systems should be applied by experts.
6. The operation and reaction periods of the resin-based systems are affected by the ambient and floor temperatures and relative humidity in the air. At low temperatures, the rate of chemical reaction slows down, and accordingly it extends the useful life, coating period and operation period. Also, due to low temperature, its viscosity increases and consumption increases during the application. High temperatures extend the chemical reaction period, and the other issues given above get shorter. Ensure that the ambient and floor temperatures are not below the allowable minimum temperature in order to make the material fully-cured. The surface should not come into direct contact with water for at least 24 hours after the coating process is completed, such a contact will lead carbonation and softening on the coating, and cause the loss of the characteristics of the coating. In case of such condition, the coating should be fully removed from the floor to be renewed.
7. Ensure that the concrete surfaces have developed 28-day resistance, and the min. pressure resistance is 25MPa and moisture is 5% minimum.
8. For the light concrete and fragile porous surfaces, ensure that the undercoating is applied in 2 coats.
9. Never perform any application (other than the non-qualified products) on the wet and humid surfaces of the resin-based products.
10. Wash the floor with water during the surface preparation.
11. The curing period should be observed by acting upon the characteristics of the used undercoating. If the period for the second coating has expired, the undercoating should be sanded and an indentation should be created on the surface by exercising the due mechanical force for adherence.

# **SURFACE PREPARATION**

## **WHAT ARE THE SURFACE PREPARATIONS?**

1. Break, hole, collapse and crack repairing,
2. Corner and sharp curve (beveling) rounding,
3. Eyelet forming on concrete and repairing,
4. Non-structural layer removing, dusting surface strengthening, segregated (concrete - aggregate segregation) surface repairing,
5. Shiny surface roughening,
6. Tie rod hole filling,
7. Removing of anti-adhesive layers such as molding oil, grease, paint, rust, salt efflorescence,
8. Designation of moisture content in concrete,
9. Undercoat selection and its significance.

### **1. BREAK, HOLE, COLLAPSE AND CRACK REPAIRING**

First of all, the surface should be cleared of defects such as break, hole, collapse, if any, before the application of waterproofing material. First, the type of such crack should be determined, and then repaired.

The cracks are separated into two groups by types;

- Non-structural Cracks
- Structural Cracks

Non-Structural Cracks;

These are superficial cracks called as plaster cracking. These types of cracks are generally static (inactive) cracks and they have an irregular appearance

The causes of nonstructural cracks are classified as follow;

- Plastic cracks
- Plastic wet shrinkage cracks
- Plastic settlement cracks

- Heat stress cracks
- Drying shrinkage cracks

#### Structural Cracks;

These are cracks on structural reinforced concrete. Such cracks are separated into two groups,

Static, also known as inactive, cracks  
(fresh concrete cracks);

#### Settlement cracks

Plastic wet shrinkage cracks

Limited wet shrinkage cracks

Dynamic, also known as active, cracks;

The causes of structural cracks are classified as follow;

- Defects in project design
- Design change
- Overload misused
- Misuse of construction materials
- Fast and hasty construction methods

lead to structural cracks, which occur as inclined cracks near the structural supports of bearings due to shearing forces, and as vertically inclined cracks at sections with high bending moment.

For the repair of these two cracks, they should be opened up in the shape of V by breaking in 3-6 mm range by mechanical methods, and it should be filled by using SUFFIX PUR SEAL 35F, SUFFIX PU SEAL BT2K10, SUFFIX EP REPAIR BOND.

Also, the cracks are grouped according to their method of repair as follow;

Cracks repairable by using repair mortar;

Superficial structural and nonstructural cracks are repaired by using various mineral and resin-based products. Cold joints and inactive cracks can be repaired by opening up in the shape of U in 3-6 mm range and using SUFFIX EP REPAIR BOND.

Cracks repairable by injection;

The process of injecting material from crack gap by using a motor pump by the help of steel dowel end (injection packers) by using various mineral and resin-based products for repair of deep cracks is called as injection, and the cracks which are repaired by using this method are called as cracks repairable by injection. For the cracks repairable by injection, you can repair them by using SUFFIX INJECTION PUR 1K or SUFFIX INJECTION PUR 2K.

## 2. CORNER AND SHARP CURVE (BEVELLING) ROUNDING

The corners on the points of junction of floor – wall, wall – wall and wall – floor should be rounded by breaking or cutting the sharp corners first and then beveled by using SUFFIX PUR SEALANT or SUFFIX TPE-BASED BEVEL BAND.

## 3. EYELET FORMING ON CONCRETE AND REPAIRING

The eyelet is the hole formed due to the air trapped inside the mold. These air voids should not be confused with the segregations depending on the factors such as the greatness of maximum aggregate diameter, the frequency of reinforcement, the non-use of vibrators etc. There is a rate of air void allowed in the ready-mixed concrete. This differs by the technical specifications, it does not pose any risk statistically, but the eyelets come up with negative effects during the waterproofing or floor coating process. During surface preparation stage, the necessary repair procedures must be carried out on the eyelets after wiping. The surface with eyelets should be corrected by adding 0.1 - 0.3 quartz sand into SUFFIX EP REPAIR BOND, SUFFIX PRIMER FILLER or SUFFIX PRIMER EP in the rate of 1:5 by using a flat steel trowel during the repair process.

## 4. NONSTRUCTURAL LAYER REMOVING, DUSTING SURFACE STRENGTHENING, SEGREGATED (CONCRETE - AGGREGATE SEGREGATION) SURFACE REPAIRING

Non-structural layers, lime stuff, oil absorbing cement floor etc. on mineral-based surfaces should be fully removed before the application.

These layers can be removed from the surface by

- Mechanical cracking process,
- High pressure water (water jet),
- Wet or dry blasting,
- Milling,
- Mechanical brushing or
- Shot blasting, grid blasting.

By removing such layers, the waterproofing layer can provide full adherence to application surface. There may be weakness on concrete surface due to insufficiency of concrete quality or negative external factors during concrete manufacturing. Such weakness may cause dusting or loose pieces. Before application, such surfaces should be scratched out to solid structure or strengthened by using proper methods. The surface can be cleared of loose parts by using mechanical methods. Following the process, wait for the dust to settle for a while and then sweep by using an industrial vacuum cleaner to remove dust from the surface. This method provides both removal of loose parts from surface and elimination of materials such as oil, wax reducing adhesive strength.

If there are segregated (concrete-aggregate segregation) surfaces, they should be repaired before the application of waterproofing layer. Such segregated area should be cleared of loose pieces by mechanical methods and it should be filled by using a repair mortar. The grain-size distribution of material should be considered to prevent segregation from the very beginning and molding conditions should be provided. Otherwise, the segregated concrete both leaks and loses its bearing strength.

## 5. SHINY SURFACE ROUGHENING:

The shiny or low adhesive surfaces preventing adhesion of materials are roughened by mechanical methods.

The methods to be used for roughening;

- High pressure water (water jet),
- Wet or dry blasting,
- Milling,
- Mechanical brushing or,
- Shot blasting, grid blasting.

## 6. TIE ROD HOLE FILLING

These are holes which are used to insert iron bars for fixing of molds during concrete manufacturing process. These holds should be filled before waterproofing process. If there are plastic pieces in the holes, they are also removed. If there are reinforcement bars on surface, their concrete surface should be broken and cut inside to 2 cm at least. Such type of holes and gaps should be filled by using highly adhesive epoxy repair mortar SUFFIX EP REPAIR BOND.

## 7. REMOVING OF ANTI-ADHESIVE LAYERS SUCH AS MOLDING OIL, GREASE, PAINT, RUST, SALT EFFLORESCENCE

### Degreasing;

The molding oil to prevent adhesion on surface should be cleaned. Various methods are used for it. These methods are as follow;

- Torch burning,
- Surface abrasion by using mechanical methods,
- Pressure water washing with detergent,
- Chemical solvent washing.

Among these cleaning methods, the relevant precautions should be taken against the danger of flame during torch burning and risk of flashing due to overheating of concrete.

### Salt Efflorescence;

When the mineral-based building materials come into contact with water, the available and water-soluble salts rise to the surface. Such salt raised to the surface as a result of water evaporation may cause to salt efflorescence. Such type of salt efflorescence decreases the waterproofing layer's adherence to surface so that it should be fully cleared before the application. This process should be made by using pressure water, wet blasting or special cleaning materials.

### Corrosion (rust) Repair;

The abrasion and degradation of the reinforcement metals due to the electro-chemical reaction with their environment is called as corrosion. Due to corrosion, the concrete on the reinforcement surface cracks and breaks into pieces depending on the ambient conditions. Exposal of the reinforcement leads to further increases the corrosion rate. If the necessary precautions have not been taken and there is corrosion due to various reasons, these parts should be repaired.



### **In the repair of corrosion (rusty surface);**

the loose parts around rusty surface should be immediately removed. Then, all sides of corroded reinforcement should be scratched and removed, or it should be opened properly for repair. And then, the corrosion on surface is fully removed by scratching. Connect the new reinforcement to this area by stretching (as overlapped). The length of this additional reinforcement is higher than the corroded area, so the area in such length should have been opened. Clean this area by using pressure air. SUFFIX PRIMER EP is applied on this reinforcement, and then this area should be filled by using a cement-based highly-resistant repair mortar or epoxy-based SUFFIX ER REPAIR BOND.

## **8. DESIGNATION OF MOISTURE CONTENT IN CONCRETE**

For preventing the damages arising from melting, swelling, freezing, cracking, shrinkage, decomposition, shocking, breaking, inflorescence, color fading in building materials, swelling, subercation in wood building materials and corrosion in metal building materials due to water-moisture exposure, it is important to prefer suitable details and materials conforming to standards, and to have qualified personnel for application. The moisture measurement tests should be performed by the personnel on the concrete application surfaces so as to control the dryness of surface before the application. It should be properly calibrated before using the measuring device according to the type of lower layer. The surface should have minimum 25 N/mm<sup>2</sup> pressure resistance and minimum 1.5 N/mm<sup>2</sup> pull-off test result. The new concrete should be poured at least 28 days ago, and the concrete surfaces should have maximum 4-8% humidity. When the moisture content is high, it should be reduced to the desired level by using a drying device.

The conditions necessary for the application as follow;

- The relative humidity of the air should be maximum 90%, and the application temperature (environment and surface) should be between +5°C and +35°C.
- There should be no rain 24 hours before the application, during the application and 24 hours after the application.
- Floor temperature should be 3°C higher than the present dewing temperature.

After all these conditions are provided, as the surface preparation processes are almost the same for each type of application, the relevant surface is cleared by shot blasting, grid blasting etc. and then it is cleaned by using an industrial vacuum cleaner to remove dust and begin coating process.

## **9. UNDERCOATING SELECTION AND ITS IMPORTANCE**

Almost all types of single or two-component resin-based materials used to support the process of filling holes in the concrete and dust-freeness of surface, have excellent penetration and they are used in the surface preparations for the application of epoxy, polyurethane and polyurea-based coatings so as to provide strength and adhesion of layers. The highly absorptive surfaces such as concrete, cement floor or wood can be undercoated after being filled with SUFFIX PRIMER PUR 1K or SUFFIX PRIMER WB EP in advance as impregnation undercoating.

The most important issue is to prefer proper undercoating according to the structure of application surface. You can check the undercoating selection table below according to the application surfaces.

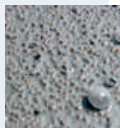
CHARACTERISTICS OF APPLICATION SURFACE	Primer EP Barrier	Primer EP	Primer EP Filler	Primer PUR 1K	Primer PUR 2K	Primer PUR 1K TRANS	Primer WB EP
Humidity Rate $\leq 4\%$		✓		✓			
Humidity Rate 4% - 8%	✓						
Humidity Rate 8% - 12%					✓		✓
Uneven Concrete Surfaces with Eyelets			✓				
Metal, Aluminum, Marble, Ceramic, Galvanized Surfaces					✓	✓	
Wood	✓				✓		
PVC				✓	✓	✓	
Highly Absorptive Surfaces				✓		✓	✓
Bitumen Coated Surfaces					✓		
Glass, Ceramic and Glazed Surfaces						✓	

The prepared mixture is applied by saturating the surface and filling the pores by using a roller or airless spray after the proper undercoating is selected. These reaction-cured products reach its full mechanical and chemical resistance in almost 7 days. The other important issue is to consider the mixture life of the two-component undercoatings and prepare it according to the specified mixing rate.

Some sections from surface defects,



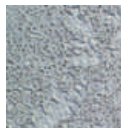
Swelling due to moisture on lower surface



Swelling due to sand on undercoating and the gap between sand particles



Adhesion weakness due to late waterproofing on undercoating



Defect on surface with rough preparation

# Surface Preparation Methods

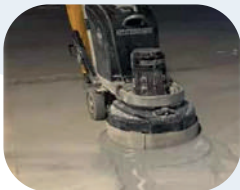
The concrete surface preparation should be performed by using one of the methods given in the pictures. Our technical stuff would be pleased to help you for different surfaces and preparation processes.



**Light Grinding**



**Crack Filling**



**Diamond Grinding**



**Milling**



**Shotblasting**



**Surface Washing**



---

## **PRODUCT REVIEW SHEETS**

---

# Waterproofing System Product Review Sheet

WATERPROOFING SYSTEM PRODUCT REVIEW SHEET																				
COATING & INSULATION SYSTEM			WATERPROOFING PRODUCTS														REPAIR PRODUCTS			
			PRODUCTS																	
			SUFFIX MS HYDRO- LV	SUFFIX PUR 550 LV	SUFFIX PUR 500 LV	SUFFIX PUR 2 CM	SUFFIX PUR 2 CM + SUFFIX PUR 2K TC	SUFFIX PUR 1KB	SUFFIX PUR 2KB	SUFFIX BK 100	SUFFIX BK 100	SUFFIX BK 200	SUFFIX PUR 1K CLR	SUFFIX POLYUREA IN	SUFFIX POLYUREA PR	SUFFIX POLYUREA HB	SUFFIX POLYUREA NEPTUNE SF	SUFFIX PU SEAL BT2X LG	SUFFIX PU SEAL 35 F	SUFFIX EP REPAIR BOND
WATER STRUCTURES	DRINKING WATER				X															
	WASTE WATER RESERVOIR				X			X												
	SALT WATER RESERVOIR													X	X	X	X	X		
	ORNAMENTAL POOL UNDER COATING		X	X	X			X						X	X	X	X	X		
	ORNAMENTAL POOL TOP COAT					X														
TERRACES AND ROOFS	SWIMMING POOL		X	X	X	X								X	X	X				
	SMALL AREAS		X	X		X								X	X	X	X	X		
	LARGE AREAS		X	X		X								X	X	X	X	X		
	OPEN TO UV		X	X									X	X	X	X	X			
	TRANSPARENT COATING ON CERAMIC		X										X							
BALCONIES AND WET AREAS	WALKABLE TERRACE		X	X										X	X	X	X	X		
	TERRACE GARDEN		X	X				X	X	X	X			X	X	X				
	TERRACE PARKING LOT		X											X	X	X	X	X		
	BALCONIES		X	X	X			X						X	X	X	X	X		
	BATHROOM and WC		X	X	X									X	X	X	X	X		
FOUNDATION WALLS AND WALLS	PUBLIC BATH SAUNA		X	X										X	X	X	X	X		
	THERMAL POOL		X	X										X	X	X	X	X		
	SMALL AREAS		X	X				X	X	X	X			X	X	X	X	X		
	LARGE AREAS							X	X	X	X			X	X	X	X	X		
	PILD FOUNDATIONS							X	X	X	X			X	X	X	X	X		
ROOF / GUTTER	LEAN CONCRETE UNDER FOUNDATION							X	X	X	X									
	RETAINING WALL		X	X																
	METAL ROOF		X	X						X	X	X		X	X	X	X	X		
	METAL / ZINC GUTTER		X	X										X	X	X	X	X		
	CONCRETE GUTTER		X											X	X	X	X	X		
BEVELLING, REPAIR AND DILATATION	BEVEL MANUFACTURING																		X	X
	ACTIVE WATER LEAK BLOCKING																			
	REPAIR AND CORRECTION																X		X	X
	COLD JOINT INSULATION																			
	DILATION FILLING MASTIC (HORIZONTAL 15 cm)																		X	
	JOINT FILLING MASTIC (HORIZONTAL AND VERTICAL 10 cm)																		X	X
	DOOR WINDOW FILLING																		X	

# Floor Coating Product Review Sheet

COATING SYSTEM		EPOXY RESIN-BASED PRODUCTS										POLYURETHANE RESIN-BASED PRODUCTS							
		PRODUCTS																	
		SUFFIX FLOOR EP SF	SUFFIX FLOOR EP TXT - SF	SUFFIX FLOOR EP SL	SUFFIX FLOOR EP TC	SUFFIX FLOOR EP TXT	SUFFIX FLOOR EP GUARD TC	SUFFIX FLOOR EP GUARD SL	SUFFIX FLOOR EP GUARD TXT	SUFFIX FLOOR EP AS	SUFFIX FLOOR STONE BINDER EP	SUFFIX FLOOR EP 3D	SUFFIX FLOOR PUR SL	SUFFIX FLOOR PUR SL FLEX	SUFFIX PU TC	SUFFIX PUR 2K TC SPORT MATT	SUFFIX FLOOR STONE BINDER PUR	SUFFIX FLOOR STONE BINDER PUR 1K	SUFFIX FLOOR PUR BINDER 1K
GENERAL	PRODUCTION AREAS	X	X	X	X							X		X					
	LOADING-UNLOADING AREAS	X	X	X	X	X						X		X					
	FINISHED-GOODS WAREHOUSES	X	X	X	X							X							
	RAW MATERIAL WAREHOUSES	X	X	X			X	X				X			X				
	OFFICES, COMMON USE AREAS	X	X	X							X	X	X	X	X	X	X	X	X
FOOD INDUSTRY	WET PRODUCTION AREAS	X	X	X						X	X	X	X	X					
	DRY PRODUCTION AREAS	X	X	X	X							X		X	X				
	HEAT TREATMENT AREAS ( ≥ 60°C )											X							
	CHEMICAL TREATMENT AREAS	X	X	X			X	X	X			X							
	COLD STORAGE DEPOTS	X	X	X								X							
DRUG INDUSTRY	CHEMICAL TREATMENT AREAS	X	X	X			X	X	X			X							
	LABORATORIES	X	X	X			X	X	X			X		X	X				
	PACKING	X	X	X			X	X	X		X	X		X	X				
	WAREHOUSE	X	X	X			X	X	X		X	X		X	X				
CHEMISTRY INDUSTRY	CHEMICAL TREATMENT AREAS						X	X	X			X							
	HEAT TREATMENT AREAS ( ≥ 60°C )																		
	LABORATORIES						X	X	X		X	X		X	X				
	PACKING						X	X	X		X	X		X	X				
ELECTRONIC AND EXPLOSIVE MATERIAL	WAREHOUSE	X	X	X			X	X	X		X	X		X	X				
	PRODUCTION AREAS									X									
	WAREHOUSES									X									
HEAVY INDUSTRY	PACKING									X									
	PRODUCTION AREAS	X	X	X															
GENERAL USE AREAS	WAREHOUSE	X	X	X															
	SCHOOLS	X	X	X							X	X	X	X	X	X	X	X	X
	SHOPPING MALLS	X	X	X							X	X	X	X	X	X	X	X	X
	EXHIBITION AND PERFORMANCE AREAS			X							X	X	X	X	X	X	X	X	X
	HOSPITALS	X	X	X		X					X		X	X			X	X	X
	HOTELS, HOLIDAY VILLAGES			X		X					X	X	X	X	X	X	X	X	X
	PARKING LOTS, GARAGES	X	X	X	X	X					X		X	X	X	X			



---

## **Primers**

---

# SUFFIX PRIMER PUR 1K

*Polyurethane-Based, Single-Component Undercoating*



## Product Definition:

SUFFIX PRIMER PUR 1K is a single-component, low-viscosity polyurethane undercoating. Used for the preparation of surfaces with polyurethane coating. Designed to increase adhesion on the lower layers of polyurethane coating.

## Areas of Application:

Concrete surfaces, Metal surfaces,  
Plastered and coated surfaces, Wooden surfaces,  
PVC surfaces,  
Bitumen-based surfaces.

## Advantages:

Single-component. Low-viscosity.  
Easily applicable to all types of surfaces.  
Strongly adhesive to glassy, pore-free lower layers.  
Perfectly covers the surface homogeneously without gap and impregnated to absorptive surfaces.  
Provides cost-efficient solution in terms of concrete tightness and protection.

## Package:

In 20 kg can buckets

## Consumption:

0.08 - 0.10 kg/m<sup>2</sup>

(This may vary depending on the roughness and absorbing capacity of the surface.)



Phone: +90 232 461 5713

[www.suffix.com.tr](http://www.suffix.com.tr)

[info@suffix.com.tr](mailto:info@suffix.com.tr)

Alkatsan Yapı Sanayi ve Ticaret Anonim Şirketi Kazım Dirik Mh. 375  
Sk. No:18 K.2 D.2 Piramit İş Merkezi Bornova/İZMİR





# SUFFIX PRIMER PUR 2K

*Polyurethane-Based, Two-Component,  
Surface-Tolerant Primer*



## Product Definition:

SUFFIX PRIMER PUR 2K is a polyurethane-based, two-component, solvent-free undercoating material developed to be used for preparation of the application surface. It has been specially designed for humid or wet concrete surfaces. Fast-curing and toxic substance-free. Solvent-free (zero VOC/Volatile Organic Components).

## Areas of Application:

Used for metal surfaces, galvanized metal, aluminum, marble, Plastered and coated surfaces, Wooden surfaces, General use, Strengthening the adhesion between layers in applications for other products, Application environments with insufficient ventilation conditions, Bitumen and asphalt based membranes, Non-polyurethane-based systems such as acrylic paints, All concrete surfaces.

## Advantages:

Perfectly adhesive to almost all types of surfaces. Solvent-free: Suitable for outdoor applications. High hydrophobic characteristics. Effective as watertightness material when processed with mineral fillings. Used as filling and geotextile adhesive.

## Package:

20 kg set SUFFIX PRIMER PUR 2K;  
Component A: 12 kg metal can bucket  
Component B: 8 kg metal can bucket

## Consumption:

Total consumption is 0.25 - 0.40 kg/m<sup>2</sup>.  
(This may vary depending on the usage in the system.)



Phone: +90 232 461 5713

[www.suffix.com.tr](http://www.suffix.com.tr)

[info@suffix.com.tr](mailto:info@suffix.com.tr)

Alkatsan Yapı Sanayi ve Ticaret Anonim Şirketi Kazım Dirik Mh. 375  
Sk. No:18 K.2 D.2 Piramit İş Merkezi Bornova/İZMİR



# SUFFIX PRIMER EP

*Epoxy-Based, Solvent-Free, Transparent, Undercoating*



## Product Definition:

SUFFIX PRIMER EP is a solvent-free, epoxy-based, transparent undercoating for general use. Used for the preparation and undercoating of the surfaces to be covered with epoxy, polyurethane and polyurea-based coating. Easy-to-use. Excellent penetration to surfaces, and fills the holes and pores. Odor-free as it is solvent-free, and so it is suitable for both indoor and outdoor applications. Excellent wearing and breaking resistance when removing the cure. Water resistant.

## Areas of Application:

Used for surface coating before application of floor coating systems.  
As undercoating for epoxy, polyurea and polyurethane surface coatings,  
As under-coating dust-free material for storehouses and factories,  
As coating for cement-based surfaces (ramps, storehouses),  
As epoxy mortar with silica sand to be used to correct elevation differences, broken pieces and surface defects before the application.

## Advantages:

Excellent penetration.  
High adhesion resistance.  
Solvent-free.  
Easy-to-use.  
Multi-purpose undercoating.

## Package:

15 kg set SUFFIX PRIMER EP;  
Component A: 10 kg metal can bucket  
Component B: 5 kg metal can bucket

## Consumption:

0.30 - 0.50 kg/m<sup>2</sup> The use of undercoating and consumption may vary based on the system solution.



# SUFFIX PRIMER EP WB

*Water-Based Transparent Epoxy Impregnation Undercoating*



## Product Definition:

SUFFIX PRIMER EP WB is an epoxy resin-based, two-component, diluted-in-water, highly wearing resistant and mechanically resistant undercoating material applicable for asphalt and humid concrete.

## Areas of Application:

Used as impregnation undercoating for floor exposed to moderate and heavy load on asphalt, concrete, cement or epoxy mortar before the application of epoxy, polyurethane or polyurea top coating,  
As transparent epoxy protective coating on epoxy or polyurethane resin-based mortar and self-levelling trowel coating,  
As transition coating to provide adhesion between the new and old floor coating of which re-coating period is over.  
As prime coat before the application of floor coating on asphalt surface.

## Advantages:

Excellent penetration to concrete,  
Dries quickly and provides quick re-coating,  
Applicable on humid concrete,  
Odor-free as it is water-based,  
Excellent adhesion on all mineral coatings and old epoxy floor coatings,  
Applicable at low temperature and in very humid environments.

## Package:

13 kg set SUFFIX PRIMER EP WB;  
Component A: 10 KG  
Component B: 3 KG

## Material Consumption:

As impregnation and transition undercoating:  
100- 150 gr/m<sup>2</sup>



Phone: +90 232 461 5713

[www.suffix.com.tr](http://www.suffix.com.tr)

[info@suffix.com.tr](mailto:info@suffix.com.tr)

Alkatsan Yapı Sanayi ve Ticaret Anonim Şirketi Kazım Dirik Mh. 375  
Sk. No:18 K.2 D.2 Piramit İş Merkezi Bornova/İZMİR



# SUFFIX PRIMER EP TH

*Epoxy-Based, Solvent-Free, Transparent, Two-Component, Low Viscosity Undercoating*



## Product Definition:

SUFFIX PRIMER EP TH is a solvent-free, epoxy-based, transparent, two-component, low-viscosity undercoating for general use. Used for the preparation and undercoating of the surfaces to be covered by epoxy, polyurethane and polyurea-based material. Easy-to-use. Excellent penetration to surfaces, and fills the holes and pores.

Odor-free as it is solvent-free, and so it is suitable for both indoor and outdoor applications. Excellent wearing and breaking resistance when removing the cure. Water resistant.

## Areas of Application:

Used for surface coating before application of floor coating systems.

As coating under epoxy, polyurea and polyurethane floor applications,

As undercoating dust-free material for storehouses and factories, as coating for cement-based surfaces (ramps, storehouses),

As epoxy mortar with silica sand to be used to correct elevation differences, broken pieces and surface defects before the application.

## Advantages:

Low-viscosity.

Excellent penetration.

High adhesion resistance. Solvent-free.

Easy-to-use.

Multi-purpose undercoating.

## Package:

14 kg set SUFFIX PRIMER EP TH;

Component A: 10 kg metal can bucket

Component B: 4 kg metal can bucket

## Consumption:

0.30 - 0.50 kg/m<sup>2</sup> The use of undercoating and consumption may vary based on the system solution.



Phone: +90 232 461 5713

[www.suffix.com.tr](http://www.suffix.com.tr)

[info@suffix.com.tr](mailto:info@suffix.com.tr)

Alkabsan Yapı Sanayi ve Ticaret Anonim Şirketi Kazım Dirik Mh. 375  
Sk. No:18 K.2 D.2 Piramit İş Merkezi Bornova/İZMİR



# SUFFIX PRIMER EP SF

*Epoxy Resin-Based, Solvent-Free, Transparent,  
Two-Component, General-Purpose Undercoating*



## Product Definition:

SUFFIX PRIMER EP SF is a solvent-free, epoxy-based, transparent, two-component impregnated undercoating for general use. Used for the preparation and undercoating of the surfaces to be covered with epoxy, polyurethane and polyurea-based coating. Easy-to-use. Excellent penetration to surfaces, and fills holes and pores. Odor-free as it is solvent-free, and so it is suitable for both indoor and outdoor applications. Excellent wearing and breaking resistance when removing the cure. Water resistant.

## Areas of Application:

Used for surface coating before application of floor coating systems,  
As undercoating for epoxy, polyurea and polyurethane surface coatings,  
As under-coating dust-free material for storehouses and factories,  
As coating for cement-based surfaces (ramps, storehouses),  
As epoxy mortar with silica sand to be used to correct elevation differences, broken pieces and surface defects before the application.

## Advantages:

Low-viscosity.  
Excellent penetration.  
High adhesion resistance.  
Solvent-free.  
Easy-to-use.  
Multi-purpose undercoating.

## Package:

15 kg set SUFFIX PRIMER EP SF;  
Component A: 10 kg metal can bucket  
Component B: 5 kg metal can bucket

## Consumption:

0.30 - 0.50 kg/m<sup>2</sup> The use of undercoating and consumption may vary based on the system solution.



Phone: +90 232 461 5713

[www.suffix.com.tr](http://www.suffix.com.tr)

[info@suffix.com.tr](mailto:info@suffix.com.tr)

Alkatsan Yapı Sanayi ve Ticaret Anonim Şirketi Kazım Dirik Mh. 375  
Sk. No:18 K.2 D.2 Piramit İş Merkezi Bornova/İZMİR



# SUFFIX PRIMER EP ZN

*Surface-Tolerant Epoxy Undercoating for Metal Surfaces*



## Product Definition:

SUFFIX PRIMER EP ZN is an epoxy-based, two-component, solvent and anti-corrosive zinc phosphate pigmented, quick-curing metal surface undercoating paint.

## Areas of Application:

Used as undercoating/intermediate coat protective epoxy paint for outer surfaces of aboveground storage tanks,  
Structural steel sector,  
On-board equipment sector,  
Steel and concrete structures and equipments in industrial plants and harbours for protection against corrosion.

## Advantages:

Adhesive, elastic, resistant to corrosion and water,  
Excellent adhesive strength on infrequently cleaned surfaces  
Extended re-coating period

## Package:

27.5 kg set SUFFIX PRIMER EP ZN;  
Component A: 25 kg  
Component B: 2.5 kg.

## Consumption:

0.15 - 0.25 kg/m<sup>2</sup>; the use of undercoating and consumption may vary based on the system solution.  
(Recommended application dry film thickness is 60 – 100 micron.)



Phone: +90 232 461 5713

[www.suffix.com.tr](http://www.suffix.com.tr)

[info@suffix.com.tr](mailto:info@suffix.com.tr)

Alkatsan Yapı Sanayi ve Ticaret Anonim Şirketi Kazım Dirik Mh. 375  
Sk. No:18 K.2 D.2 Piramit İş Merkezi Bornova/İZMİR



# SUFFIX PRIMER EP BARRIER

*Epoxy-Based, Two-Component, Moisture Barrier Coating, Adherence Bridge and Penetration Material*



## Product Definition:

SUFFIX PRIMER EP BARRIER is an epoxy-based, two-component undercoating material used as adherence bridge and moisture barrier. Easy-to-apply and excellent penetration to mineral-based surface. Easily used for indoor and outdoor application as it is solvent-free. Forms a water-resistant, wearing and breaking resistant film when removing the cure. The film formed is impermeable and resistant to bases, acids, diluted saline solutions, grease oil and petroleum products.

## Areas of Application:

Used as moisture barrier and undercoating layer for epoxy floor coating applications, As adherence booster undercoating for epoxy applications, As moisture barrier and undercoating layer before the application of polyurethane and polyurea insulation materials, As concrete booster for loose surfaces, As water and moisture barrier for concrete surfaces. As adherence bridge for new concrete application on old concrete blocks.

## Advantages:

Excellent penetration to mineral-based surfaces.  
High adhesion resistance.  
Solvent-free. Easy-to-use.

Multi-purpose undercoating.  
Suitable for indoor and outdoor application as it is solvent-free.  
Resistant to moisture rising from the floor.

## Package:

17.5 kg set  
SUFFIX PRIMER EP BARRIER;  
Component A:  
12.5 kg metal can bucket  
Component B:  
5 kg metal can bucket

## Consumption:

0.45 - 0.70 kg/m<sup>2</sup>; the use of undercoating and consumption may vary based on the system solution.



Phone: +90 232 461 5713

[www.suffix.com.tr](http://www.suffix.com.tr)

[info@suffix.com.tr](mailto:info@suffix.com.tr)

Alkatsan Yapı Sanayi ve Ticaret Anonim Şirketi Kazım Dirik Mh. 375  
Sk. No:18 K.2 D.2 Piramit İş Merkezi Bornova/İZMİR



# SUFFIX PRIMER EP FILLER

*Epoxy-Based, Two-Component, Filled Undercoating*



## Product Definition:

SUFFIX PRIMER EP FILLER is a two-component, epoxy-based, filled undercoating material. Easy to apply and excellent penetration to surface. Fills the eyelets and micro-cracks and pores on application surfaces thanks to its filler structure. Suitable for indoor and outdoor application as it is solvent-free.

Forms a water-resistant, wearing and breaking resistant film when removing the cure. The film formed is impermeable and resistant to bases, acids, diluted saline solutions, grease oil and petroleum products.

## Areas of Application:

Used as undercoating layer for the epoxy floor coating applications, As undercoating layer before the application of polyurethane and polyurea insulation materials, As filling of eyelets and pores found on application surfaces.

## Advantages:

Good penetration, Excellent adhesion resistance, Easy-to-apply.

## Package:

20 kg set SUFFIX PRIMER EP FILLER;  
Component A; 16 kg can bucket  
Component B: 4 kg can bucket

## Consumption:

0.50 - 0.80 kg/m<sup>2</sup> The use of undercoating and consumption may vary based on the system solution.



Phone: +90 232 461 5713

[www.suffix.com.tr](http://www.suffix.com.tr)

[info@suffix.com.tr](mailto:info@suffix.com.tr)

Alkabsan Yapı Sanayi ve Ticaret Anonim Şirketi Kazım Dirik Mh. 375  
Sk. No:18 K.2 D.2 Piramit İş Merkezi Bornova/İZMİR





# SUFFIX PRIMER PUR 1K TRANS

*Polyurethane-Based, Single-Component,  
Glass and Glazed Surface Undercoating*



## Product Definition:

SUFFIX PRIMER PUR 1K TRANS is a single-component, low-viscosity, transparent polyurethane undercoating. It ensures that the coatings to be applied on glass and glazed surfaces adhere to these surfaces.

## Areas of Application:

Glass surfaces,  
Ceramic surfaces,  
Glazed surfaces.  
Used as transition undercoating.

## Advantages:

Single-component.  
Low-viscosity.  
Quick-setting.  
UV-resistant.

## Package:

1 L, 5 L, 20 L

## Consumption:

0.05 - 0.10 L/m<sup>2</sup>

(This may vary depending on  
the usage in the system.)



Phone: +90 232 461 5713

[www.suffix.com.tr](http://www.suffix.com.tr)

[info@suffix.com.tr](mailto:info@suffix.com.tr)

Alkabsan Yapı Sanayi ve Ticaret Anonim Şirketi Kazım Dirik Mh. 375  
Sk. No:18 K.2 D.2 Piramit İş Merkezi Bornova/İZMİR





---

## **Insulations**

---

# SUFFIX PUR 500 LV

*Polyurethane-based, single-component,  
Liquid Membrane Waterproofing Material*



## Product Definition:

SUFFIX PUR 500 LV is a single-component, polyurethane-based liquid waterproofing material. Cured with moisture in the air. Forms a highly elastic and durable film by adhering perfectly to different surfaces. Shows excellent mechanical and chemical properties, provides high tensile, tear and abrasion resistance. Effective in water vapor transmission. The film breathes and prevents moisture from accumulating on the substrate. Has the characteristic of bridging shrinkage cracks with its elastic structure. Contains pure elastomeric, hydrophobic polyurethane resin and special inorganic admixture materials. Easy-to-use.

## Areas of Application:

SUFFIX PUR 500 LV

Concrete roofs, Verandas and balconies, Bathroom,  
Light roofs made of metal and fibrous materials, Asphalt membranes, EPDM membranes, Bridge platforms, Irrigation channels.

## Advantages:

Can be diluted with xylene in some conditions even if there is no need.  
Excellent thermal resistance.  
Excellent mechanical characteristics.  
Effectively resistant to chemicals.

Contains no toxic substance after cured. The film is capable of breathing; effective in water vapor transmission.

## Package:

25 kg bucket

## Consumption:

First coat: 0.60 - 0.90 kg/m<sup>2</sup>,  
Second coat: 0.60 - 0.90 kg/m<sup>2</sup>;  
A total application consumption of  
1.20 - 1.80 kg/m<sup>2</sup>



# SUFFIX PUR 550 LV

*Polyurethane-Based, Single-Component, Liquid Membrane Waterproofing Material*



## Product Definition:

SUFFIX PUR 550 LV is a single-component, polyurethane-based liquid waterproofing material. Cured with moisture in the air. Forms a highly elastic and durable film by adhering perfectly to different surfaces. Shows excellent mechanical and chemical properties, provides high tensile, tear and abrasion resistance. Effective in water vapor transmission. The film breathes and prevents moisture from accumulating on the substrate.

Has the characteristic of bridging shrinkage cracks with its elastic structure. Contains pure elastomeric, hydrophobic polyurethane resin and special inorganic admixture materials. The product content allows the material to build up excellent UV, chemical, mechanical and thermal resistance. Easy-to-use.

## Areas of Application:

SUFFIX PUR 550 LV is used for waterproofing on  
Concrete roofs,  
Verandas and balconies,  
Bathrooms,  
Light roofs made of metal and fibrous materials, Asphalt membranes, EPDM membranes, Bridge platforms, Irrigation channels.

## Advantages:

Highly resistant to UV rays.  
Significantly decreases the building's temperature as it reflects the great amount of solar energy thanks to its white color.  
Can be diluted with xylene in some

conditions even if there is no need.

Excellent thermal resistance.

Resistant to cold. Film retains its elasticity up to -40 °C.

Excellent mechanical characteristics.

Effectively resistant to chemicals.

Contains no toxic substance after cured.

The film is capable of breathing; effective in water vapor transmission.

## Package:

25 kg bucket

## Consumption:

First coat: 0.60 - 0.90 kg/m<sup>2</sup>,

Second coat: 0.60 - 0.90 kg/m<sup>2</sup>;

A total application consumption of 1.20 - 1.80 kg/m<sup>2</sup>



Phone: +90 232 461 5713

[www.suffix.com.tr](http://www.suffix.com.tr)

[info@suffix.com.tr](mailto:info@suffix.com.tr)

Alkatsan Yapı Sanayi ve Ticaret Anonim Şirketi Kazım Dirik Mh. 375  
Sk. No:18 K.2 D.2 Piramit İş Merkezi Bornova/İZMİR



# SUFFIX PUR 2CM

*Polyurethane-Based, Two-Component Liquid Membrane Waterproofing Material*



## Product Definition:

SUFFIX PUR 2CM, double-component, solvent-free, elastic, crack bridging, polyurethane based waterproofing material. Provides high mechanical resistance and forms a hydrophobic membrane when cured. Easily applicable for indoor areas as it is solvent-free. Perfectly adhesive to all types of surfaces. Easily applicable even for tough details thanks to its suitable viscosity.

## Areas of Application:

Used for Water tanks, Channels  
Open wet areas under or top of the ceramic, Pools,  
Waterproofing of the intermediate floors and roof sections of multi-storey car parks, Terraces.

## Advantages:

Perfectly adhesive to almost all types of surfaces. Easily applicable for indoor areas as it is solvent-free. Provides very high hydrophobic and hydrolysis resistance. Gives performance in wide range of temperatures. Its heat resistance is

between -40°C and 90°C.  
Effectively resistant to chemicals.  
It is the optimal solution for water tanks in terms of cost-performance.

## Package:

18 kg set SUFFIX PUR 2CM;  
Component A: 13 kg metal can bucket  
Component B: 5 kg metal can bucket

## Consumption:

It should be applied with  
1.50 – 2.00 kg/m<sup>2</sup> consumption.



Phone: +90 232 461 5713

[www.suffix.com.tr](http://www.suffix.com.tr)

[info@suffix.com.tr](mailto:info@suffix.com.tr)

Alkatsan Yapı Sanayi ve Ticaret Anonim Şirketi Kazım Dirik Mh. 375  
Sk. No:18 K.2 D.2 Piramit İş Merkezi Bornova/İZMİR



# SUFFIX PUR 1KB

*Polyurethane-Bitumen Modified-Based, Single Component, Liquid Waterproofing and Protection Material*



## Product Definition:

SUFFIX PUR 1KB is a single-component, bitumen-modified, polyurethane-based liquid waterproofing material. Cured with moisture in the air. Forms a highly elastic and durable film by adhering perfectly to different surfaces. In excellent mechanical and chemical characteristics; provides high tension, tearing and wearing resistance. Effective in water vapor transmission. The film breathes and prevents moisture from accumulating on the substrate. Has the characteristic of bridging shrinkage cracks with its elastic structure. Product completely contains pure elastomeric, hydrophobic polyurethane resin and special inorganic admixture materials. Easy-to-use.

## Areas of Application:

Used for waterproofing of Foundations, Roofs, verandas and balconies (providing that it is closed), Wet floors, Horizontally and vertically for structural units requiring insulation material in high crack bridging characteristics, Cement based lower layers, Very humid indoor areas, Under bathroom tiles Asphalt, bitumen seals etc.

## Advantages:

Applied by a roller as it is a liquid material; it is not necessary to use open flame (blow torch) during the application. Provides an excellent waterproofing membrane without joint when applied. Freezing-resistant. Fast curing. Undercoated or non-undercoated, highly

adhesive to almost all types of surfaces. Excellent thermal resistance; never becomes soft. Resistant to cold, keeps its elasticity up to -40 °C. In excellent mechanical characteristics; provides high elongation, tension, tearing and wearing resistance. Excellent chemical resistance.

**Package:**  
25 kg bucket

**Consumption:**  
First coat: 0.60 - 1.00 kg/m<sup>2</sup>,  
Second coat: 0.90 - 1.00 kg/m<sup>2</sup>;  
A total application consumption of 1.50 - 2.00 kg/m<sup>2</sup>



# SUFFIX PUR 2KB

*Polyurethane- Bitumen Modified Based, Double Component, Liquid Waterproofing and Protection Material*



## Product Definition:

SUFFIX PUR 2KB is a two-component, polyurethane-bitumen-modified, liquid waterproofing material. Quickly cured and forms a quite elastic film by perfectly adhering to different surfaces. Perfectly adhesive to almost all types of surfaces. No need for diluent. In excellent mechanical characteristics; provides high tension, tearing and wearing resistance. Excellent chemical resistance. Effective in water vapor transmission. Film is capable of breathing and prevents the accumulation of humidity under the coat. Provides thick coating, no bubbling. Provides high crack bridging. Excellent covering and adhesive to surface. Easily and quickly applicable, provides easy solutions for detailed insulation applications. Has high thermal resistance; retains its mechanical property at temperatures between -40 / +80 °C.

## Areas of Application:

SUFFIX PUR 2KB is used for waterproofing of roof terrace areas, Parking lots, Aircraft hangars, Tunnels, Asphalt and EPDM membranes, Flowerbeds and green roof systems, Insulation of roofs made of metal or fibrous cement, Utility water tanks, Insulation of foundation and shear concretes of constructions, Irrigation channels.

## Advantages:

Easy mixing process as the components are in 1/1 volume. Fast curing. Provides thick coating, no bubbling. Excellent crack bridging. Undercoated or non-undercoated, highly adhesive to almost all types of surfaces. Solvent can be used in some conditions even if there is no need for any

diluent. Excellent thermal resistance; never becomes soft. Maximum usage temperature is 80 °C, while the maximum shock temperature is 200 °C. Resistant to cold. Film retains its elasticity up to -40 °C. In excellent mechanical characteristics; provides high elongation, tension, tearing and wearing resistance. Highly resistant to chemicals. Effective as water vapor barrier. Applied by a roller as it is a liquid material; it is not necessary to use open flame (blow torch) during the application.

## Package:

40 kg sets of which component A (resin) and component B (hardener) rates are designated.

## Consumption:

2.0 - 2.2 kg/m<sup>2</sup>



# SUFFIX BK 100

*Polymer-Modified Bitumen Rubber-Based,  
Single Component Waterproofing Material*



## Product Definition:

SUFFIX BK 100 is a bitumen – rubber-based, single component, high-viscosity waterproofing material.

## Areas of Application:

For foundation and shear concretes,  
Wet environments, retaining walls,  
For protection and insulation of  
constructions and construction elements  
exposed to seepage water, temporary or  
permanent water pressure,  
For adhesion of plates for insulation  
and drainage.

## Advantages:

Easy-to-prepare and apply, Solvent-free,  
environment-friendly,  
Provides a humid-water resistant complete  
coating with no joint,  
Applicable for vertical and horizontal  
grounds, Good adhesion to application  
surface, Capable of bridging shrinkage  
cracks thanks to its elasticity,  
Applicable for dry and slightly humid  
surfaces, Applicable by using a brush or  
steel trowel, Resistant to freeze-thaw,  
Resistant to various salt solutions  
and mild acid, Applicable for  
movable and vibrant areas.

## Consumption:

It is 3 - 5 kg/m<sup>2</sup> depending on the type  
of surface and the necessary protection  
degree.

## Package:

Plastic bucket; 18 kg



Phone: +90 232 461 5713

[www.suffix.com.tr](http://www.suffix.com.tr)

[info@suffix.com.tr](mailto:info@suffix.com.tr)

Alkatsan Yapı Sanayi ve Ticaret Anonim Şirketi Kazım Dirik Mh. 375  
Sk. No:18 K.2 D.2 Piramit İş Merkezi Bornova/İZMİR





# SUFFIX BK 180

*Polymer-Modified Bitumen,  
Two Component Waterproofing Material*



## Product Definition:

SUFFIX BK 180 is a bitumen-based, two-component, high-viscosity, thick waterproofing coating material.

## Areas of Application:

For foundation and shear concretes,  
Wet environments, retaining walls,  
For protection and insulation of  
constructions and construction elements  
exposed to seepage water, temporary or  
permanent water pressure,  
For adhesion of plates for insulation and  
drainage.

## Advantages:

Easy-to-prepare and apply, Solvent-free,  
environment-friendly,  
Provides a humid-water resistant complete  
coating with no joint,  
Applicable for vertical and horizontal  
grounds, Good adhesion to application  
surface, Capable of bridging shrinkage  
cracks thanks to its elasticity,  
Applicable for dry and slightly humid  
surfaces, Applicable by using a brush or  
steel trowel,  
Resistant to freeze-thaw,  
Resistant to various salt solutions and mild  
acid, Applicable for movable  
and vibrant areas.

## Consumption:

It is 3 - 5 kg/m<sup>2</sup> depending on the type  
of surface and the necessary protection  
degree.

## Package:

30 kg plastic bucket set;  
Powder Component: 8 kg Liquid  
Component: 22 kg



Phone: +90 232 461 5713

[www.suffix.com.tr](http://www.suffix.com.tr)

[info@suffix.com.tr](mailto:info@suffix.com.tr)

Alkabsan Yapı Sanayi ve Ticaret Anonim Şirketi Kazım Dirik Mh. 375  
Sk. No:18 K.2 D.2 Piramit İş Merkezi Bornova/İZMİR



# SUFFIX BK 200

*Polymer-Modified Bitumen Rubber-Based  
Two-Component Waterproofing Material*



## Product Definition:

SUFFIX BK 200 is a cement and bitumen – rubber-based, two-component, high-viscosity, thick waterproofing coating material.

## Areas of Application:

For foundation and shear concretes,  
Wet environments, retaining walls,  
For protection and insulation of constructions and construction elements exposed to seepage water, temporary or permanent water pressure,  
For adhesion of plates for insulation and drainage.

## Advantages:

Easy-to-prepare and apply,  
Solvent-free, environment-friendly,  
Provides a humid-water resistant complete coating with no joint,  
Applicable for vertical and horizontal grounds,  
Good adhesion to application surface,  
Capable of bridging shrinkage cracks thanks to its elasticity,  
Applicable for dry and slightly humid surfaces,  
Applicable by using a brush or steel trowel,  
Resistant to freeze-thaw,  
Resistant to various salt solutions and mild acid,  
Applicable for movable and vibrant areas.

## Consumption:

It is 3 - 5 kg/m<sup>2</sup> depending on the type of surface and the necessary protection degree.

## Package:

30 kg plastic bucket set  
Powder Component: 8 kg  
Liquid Component: 22 kg



Phone: +90 232 461 5713

[www.suffix.com.tr](http://www.suffix.com.tr)

[info@suffix.com.tr](mailto:info@suffix.com.tr)

Alkatsan Yapı Sanayi ve Ticaret Anonim Şirketi Kazım Dirik Mh. 375  
Sk. No:18 K.2 D.2 Piramit İş Merkezi Bornova/İZMİR



# SUFFIX PUR 2K TC

*Aliphatic Polyurethane Based, Two Component,  
UV Resistant Top Coating Material*



## Product Definition:

SUFFIX PUR 2K TC is a two component, polyurethane based, high UV resistant, liquid top coating material. Forms a highly elastic and durable film by adhering perfectly to different surfaces. Shows excellent mechanical and chemical properties, provides high tensile, tear and abrasion resistance. Effective in water vapor transmission. The film breathes and prevents moisture from accumulating on the substrate. Has the characteristic of bridging shrinkage cracks with its elastic structure. Has high chlorine resistance used in pools.

## Areas of Application:

Concrete Roofs,  
Pools, ponds  
Verandas and balconies,  
Light roofs made of metal and fibrous materials,  
Bridge platforms,  
Ceramic tile, natural stone tile etc. surfaces,  
Protection of polyurethane foam insulation,  
As a final coating on the waterproofing materials used.

## Advantages:

Resistant to UV rays,  
Has high abrasion and chemical resistance,  
Elastic,  
Provides excellent adherence to  
non-absorbent surfaces,  
Low-viscosity.  
High resistance against high chlorine  
and algae inhibiting chemical use.

## Package:

10 kg set SUFFIX PUR 2K TC;  
Component A: 7.50 kg metal box  
Component B: 2.50 kg metal box

## Consumption:

Total consumption is 0.25 - 0.40 kg/m<sup>2</sup>.  
(This may vary depending on the usage in the system.)



Phone: +90 232 461 5713

[www.suffix.com.tr](http://www.suffix.com.tr)

[info@suffix.com.tr](mailto:info@suffix.com.tr)

Alkatsan Yapı Sanayi ve Ticaret Anonim Şirketi Kazım Dirik Mh. 375  
Sk. No:18 K.2 D.2 Piramit İş Merkezi Bornova/İZMİR



# SUFFIX PU TC

*Aliphatic Polyurethane Top-Coat Paint*



## Product Definition:

It is a polyurethane resin-based, two-component, flexible floor paint. UV-resistant, suitable for outdoor applications. Smooth, bright-finish top-coat for paint systems designed as multi-layer or fine-layer coating. High wearing and chemical resistance.

## Areas of Application:

Used as top-coat for outdoor floor coating systems,  
As outdoor sighting, road line paint, As top-coat for insulation system used in balconies, roofs, terraces and outdoor parking lots.

## Advantages:

UV-resistant thanks to its aliphatic structure. Easy to apply.  
Suitable for application by using an airless spray paint machines.  
Resistant to diesel, fuel and many chemicals.  
High wearing resistance. Flexible.  
Provides hygienic environment as it is easy-to-clean, and smooth and bright-finished surface.

## Package:

20.64 kg set SUFFIX PU TC;  
Component A: 16 kg  
Component B: 4.64 kg.

## Consumption:

Total consumption is 0.15-0.20 kg/m<sup>2</sup>.



Phone: +90 232 461 5713

[www.suffix.com.tr](http://www.suffix.com.tr)

[info@suffix.com.tr](mailto:info@suffix.com.tr)

Alkatsan Yapı Sanayi ve Ticaret Anonim Şirketi Kazım Dirik Mh. 375  
Sk. No:18 K.2 D.2 Piramit İş Merkezi Bornova/İZMİR



# SUFFIX MS HYDRO-LV

*Single-Component MS Polymer Waterproofing Membrane*



## Product Definition:

SUFFIX MS HYDRO - LV is a single component, self-fluid, liquid, ready-to-use, UV-resistant, solvent and isocyanate-free, highly and permanently elastic, high-technology coating and waterproofing material applicable by using a roller and brush which is produced by MS Polymer technology. It is used for waterproofing of horizontal and vertical large surfaces and bridging of microcracks up to 5 mm.

## Areas of Application:

Used in indoor and outdoor areas  
Horizontal and vertical surfaces  
Terraces, Balconies,  
Roofs, Chimney junctions,  
For the protection of polyurethane heat insulation foam Concrete, stone, marble, ceramic, ceramic tile, all kinds of wood, glass, metal, roof tile, brick, precast concrete panel, gas concrete etc. mineral-based surfaces and almost all types of surfaces and combinations of them, Potable water reservoirs, pools and cisterns, Wet areas such as bathrooms and kitchens, Underground foundations, garages, basements as resistant to non-pressure water and soil moisture, Bridges, deck concrete for waterproofing and protection purposes.

## Advantages:

Contains no solvent and isocyanate harmful to the environment and human health. Easily used for indoor areas and potable water contact. Has 100% elastomeric structure, no volume loss as it contains no solvent. UV-resistant, no cracking, yellowing and leakage. Easily used for outdoor areas. Perfectly adhesive to humid surfaces even with no undercoating, provides high adherence. Applicable with no undercoating depending on floor structure. Very flexible, provides crack bridging up to 5 mm and crack filling up to 2 mm. Retains its elasticity and adherence characteristics for junctures and cracks

formed and expanded due to the movements of building. In perfect recovery characteristics. Not harmful to the environment and human health thanks to its low VOC values. Almost odor-free. Easily and quickly applicable by using a brush or roller. Forms no juncture. Can be painted over. Easily and quickly applicable as it is single component.

## Package:

Contained in 7 kg aluminum folio packaging in plastic bucket:  
in 7 kg and 14 kg.

## Consumption:

Or each coat,  
1.20 - 1.30 kg/m<sup>2</sup> for about 1-mm thickness (Depending on roughness and absorbing capacity of the surface.)



Phone: +90 232 461 5713

[www.suffix.com.tr](http://www.suffix.com.tr)

[info@suffix.com.tr](mailto:info@suffix.com.tr)

Alkatsan Yapı Sanayi ve Ticaret Anonim Şirketi Kazım Dirik Mh. 375  
Sk. No:18 K.2 D.2 Piramit İş Merkezi Bornova/İZMİR



# SUFFIX PUR 1K CLR

*Aliphatic Polyurethane-Based, Single Component, Transparent, UV Resistant Waterproofing Material*



## Product Definition:

SUFFIX PUR 1K CLR is a single-component, transparent, polyurethane-based, highly UV-resistant, liquid waterproofing material. Cured with moisture in the air. Forms a quite elastic and durable film with high UV resistance by perfectly adhering to different surfaces. Shows excellent mechanical and chemical properties, provides high tensile, tear and abrasion resistance. Effective in water vapor transmission. The film breathes and prevents moisture from accumulating on the substrate.

## Areas of Application:

Used for marble, ceramic floor tiles, Verandas and terraces, Wooden surfaces.

## Advantages:

Easy to apply (by a roller or airless spray). Resistant to UV rays, Non-paling. Forms a seam-free cover preventing any juncture or leakage when applied. Resistant to puddles. Retains its mechanic characteristics at temperatures between -30°C and +90°C. Freezing-resistant. Fully adhesive to surface. Possible to walk on the application surface. Protects mineral surfaces against freezing, vapor and acid rain. Provides a more transparent appearance on plastic surfaces aged or oxidated. Prevents the disintegration of glass by providing waterproofing for damaged glass surfaces.

## Package:

5 and 20 liter buckets

## Consumption:

The consumption of 1-3 coat application can change depending if it is for waterproofing or renovation, and the absorbing capacity of the surface.

Dust and pollution-resistant surface coating:

~ 0.2 L/m<sup>2</sup> (1-coat fine application)

Waterproofing membrane (closed porous surface & light pedestrian traffic):

~ 0.7 L/m<sup>2</sup>

(2-coat application with 0.3 - 0.4 L/m<sup>2</sup> each)

Waterproofing membrane (absorptive surface & heavy pedestrian traffic)

~ 1.0 L/m<sup>2</sup>

(3-coat application with 0.3 - 0.4 L/m<sup>2</sup> each)



Phone: +90 232 461 5713

[www.suffix.com.tr](http://www.suffix.com.tr)

[info@suffix.com.tr](mailto:info@suffix.com.tr)

Alkatsan Yapı Sanayi ve Ticaret Anonim Şirketi Kazım Dirik Mh. 375  
Sk. No:18 K:2 D:2 Piramit İş Merkezi Bornova/İZMİR



# SUFFIX POLYUREA IN

*100% Pure Polyurea-Based, Two-Component, Rapid-Cured Waterproofing Material*



## Product Definition:

SUFFIX POLYUREA IN is double component, solvent and plasticizer-free pure polyurea system consisting of 100% solid substances. Applied by hot spraying technique at high pressure by using application machines designed for two-component products.

SUFFIX POLYUREA IN is an elastic waterproofing product especially for industrial areas requiring high mechanical and chemical resistance. Adhesive to concrete, metal and mineral surfaces. Dries quickly, service period is short. Does not produce bubbles on surfaces properly prepared and undercoated.

## Areas of Application:

Industrial floorings,  
Wastewater treatment plants,  
Sewer pipe lines,  
Steel and concrete pipes,  
Swimming pools, water tanks,  
Underground structures,  
Roofs, balconies, terraces,  
Parking area roofs.

## Advantages:

Applicable on various surfaces with proper undercoating,  
Undercoating-free application on carbon or low carbon steel surfaces and undercoating-free application with proper surface profile (75 - 100 micron surface sander),  
VOC-free and odor-free,  
Applicable on horizontal and vertical

surfaces, Provides monolithic surface not requiring joint filling,  
Quick application and surface quickly becomes ready-to-use,  
Suitable for continuous water exposure,  
Flexible, high mechanical and wearing resistance,  
Resistant to subsoil chemicals.  
Keeps its elasticity up to -45°C.  
Thermoset. Does not soften at high temperatures.

## Package:

425 kg sets of which component A (resin) and component B (hardener) rates are designated

## Consumption:

2.0 - 2.2 kg/m<sup>2</sup>



# SUFFIX POLYUREA PR

*Pure Polyurea-Based, Two-Component,  
Hot-Cured Waterproofing Material*



## Product Definition:

SUFFIX POLYUREA PR is double component, solvent and plasticizer-free pure polyurea system consisting of 100% solid substances. Applied by hot spraying technique at high pressure by using application machines designed for two-component products.

SUFFIX POLYUREA PR is an elastic waterproofing product with high mechanical and chemical resistance. Adhesive to concrete, metal and mineral surfaces. Dries quickly, service period is short. Does not produce bubbles on surfaces properly prepared and undercoated.

## Areas of Application:

Roofs, balconies, terraces,  
Green roof systems,  
Swimming pools, water tanks,  
Parking area roofs,  
Steel and concrete pipes,  
Underground structures

## Advantages:

Applicable on various surfaces with proper undercoating,  
Undercoating-free application on carbon or low carbon steel surfaces and undercoating-free application with proper surface profile (75 - 100 micron surface sander),  
VOC-free and odor-free,  
Applicable on horizontal and vertical surfaces, Provides monolithic surface not requiring joint filling,  
Quick application and surface quickly becomes ready-to-use,  
Suitable for continuous water exposure,

Flexible, high mechanical and wearing resistance, Resistant to subsoil chemicals.

Preserves elasticity up to -45°C.

Thermoset. Does not soften at high temperatures.

It is ASTM G160-12 certified against microbial susceptibility.

It is certified for resistance to plant roots in accordance with the CEN/TSE 14416 standard.

## Package:

425 kg sets of which component A (resin) and component B (hardener) rates are designated

## Consumption:

2.0 - 2.2 kg/m<sup>2</sup>



Phone: +90 232 461 5713

[www.suffix.com.tr](http://www.suffix.com.tr)

[info@suffix.com.tr](mailto:info@suffix.com.tr)

Alkatsan Yapı Sanayi ve Ticaret Anonim Şirketi Kazım Dirik Mh. 375  
Sk. No:18 K.2 D.2 Piramit İş Merkezi Bornova/İZMİR





# SUFFIX POLYUREA HB

*Hybrid Polyurea-Based, Two-Component, Quick-Cured  
Waterproofing Material*



## Product Definition:

SUFFIX POLYUREA HB is a two-component, solvent and plasticizer-free, hybrid polyurea system consisting of 100% solid materials. Applied by hot spraying technique at high pressure by using application machines designed for two-component products. SUFFIX POLYUREA HB is an elastic waterproofing product with high mechanical and chemical resistance. Adhesive to concrete, metal and mineral surfaces. Dries quickly, service period is short. Does not produce bubbles on surfaces properly prepared and undercoated.

## Areas of Application:

Roofs, balconies, terraces,  
Swimming pools, water tanks,  
Parking area roofs,  
Steel and concrete pipes,  
Underground structures

## Advantages:

Applicable on various surfaces with proper undercoating,  
Undercoating-free application on carbon or low carbon steel surfaces and undercoating-free application with proper surface profile (75-100 micron surface sander),  
VOC-free and odor-free,  
Applicable on horizontal and vertical surfaces, Provides monolithic surface not requiring joint filling,

Quick application and surface quickly becomes ready-to-use,  
Suitable for continuous water exposure,  
Flexible, high mechanical and wearing resistance, Resistant to subsoil chemicals.  
Preserves elasticity up to -45°C.  
Thermoset.  
Does not soften at high temperatures.

## Package:

425 kg sets of which component A (resin) and component B (hardener) rates are designated

## Consumption:

2.0 - 2.2 kg/m<sup>2</sup>



Phone: +90 232 461 5713

[www.suffix.com.tr](http://www.suffix.com.tr)

[info@suffix.com.tr](mailto:info@suffix.com.tr)

Alkatsan Yapı Sanayi ve Ticaret Anonim Şirketi Kazım Dirik Mh. 375  
Sk. No:18 K.2 D.2 Piramit İş Merkezi Bornova/İZMİR



# SUFFIX POLYUREA NEPTUNE SF

*Polyurea-Based, Solvent-Free, Two-Component, Cold Applied, Liquid Membrane Waterproofing Material*



## Product Definition:

SUFFIX POLYUREA NEPTUNE - SF is a two-component cold applied, easy-to-use polyurea system.

SUFFIX POLYUREA NEPTUNE - SF is an elastic waterproofing product with high mechanical and chemical resistance. Adhesive to concrete, metal and mineral surfaces. Dries quickly, service period is short.

Excellent crack bridging. Does not produce bubbles on surfaces properly prepared and undercoated.

## Areas of Application:

Used for concrete structures, roofs, balconies, terraces, Water tanks, Secondary container waterproofing, Can be used as hot spraying repair kit.

## Advantages:

Crack bridging up to 2 mm. Flexible.

Suitable for 2 mm-thick single coat application. Provides monolithic surfaces that does not require joint filling.

Fast curing.

## Package:

Component A:

10 kg metal box

Component B:

1.7 kg plastic can packaging

## Consumption:

1.50 - 2.20 kg/m<sup>2</sup>



# SUFFIX POLYUREA NEPTUNE

*Polyurea-Based, Two-Component, Cold Applied,  
Liquid Membrane Waterproofing Material*



## Product Definition:

SUFFIX POLYUREA NEPTUNE is a two-component cold applied, easy-to-use polyurea system.

SUFFIX POLYUREA NEPTUNE is an elastic water insulation product with high mechanical and chemical resistance. Adhesive to concrete, metal and mineral surfaces. Dries quickly, service period is short. Excellent crack bridging. Does not produce bubbles on surfaces properly prepared and undercoated.

## Areas of Application:

Used for concrete structures, roofs, balconies, terraces, water tanks, secondary container waterproofing. Can be used as hot spraying repair kit.

## Advantages:

Crack bridging up to 2 mm.  
Flexible.  
Suitable for 2 mm-thick single coat application.  
Provides monolithic surfaces that does not require joint filling.  
Fast curing.

## Package:

Component A: 10 kg  
Component B: 0.6 kg

## Consumption:

2.0 - 2.2 kg/m<sup>2</sup>



# SUFFIX PUR 2K 70

*Polyurethane-Based, Two-Component,  
Hot-Cured Waterproofing Material*



## Product Description:

SUFFIX PUR 2K 70 is a two-component, solvent and plasticizer-free polyurethane system consisting of 100% solid materials. It is applied by hot spraying technique at high pressure by using application machines designed for double component products. SUFFIX PUR 2K 70 is an elastic waterproofing product with high mechanical and chemical resistance. Adhesive to concrete, metal and mineral surfaces. Dries quickly, service period is short. Does not produce bubbles on surfaces properly prepared and undercoated.

## Areas of Application:

Used for swimming pools, water tanks, Treatment facilities, Underground structures, Roofs, balconies, terraces, Industrial floorings, Parking area roofs.

## Advantages;

High mechanical resistance.  
Applicable on horizontal and vertical surfaces, Provides easy solutions for tough details. Provides quick application and quick curing. Provides monolithic application not requiring joint filling, overlapping etc.  
Applicable on various surfaces with proper coating.  
Provides 100% adherence to surface.  
Low expansion risk thanks to vapor permeability.  
Crack covering ability.  
Suitable for continuous water exposure.

## Package:

420 kg sets in proportion to component A (resin) and component B (hardener)

## Consumption:

2.0 – 2.2 kg / m<sup>2</sup>





---

## **Injections**

---

# SUFFIX INJECTION PUR 1K

*Polyurethane Injection Resin-Based, Single-Component, Hydrophobic, Crack Filling and Waterproofing Material*



## Product Definition:

SUFFIX INJECTION PUR 1K, polyurethane based, single component, hydrophobic injection resin developed to block the water leaking from cracks and pores on concrete surfaces and to fill/hold the cracks and loose formations. Produces a semi-firm hydrophobic foam by reacting to water. Effectively blocks the water leakages by rapidly and thoroughly penetrating into concrete cracks thanks to its low viscosity. Applied by using a single-component injection pump.

## Areas of Application:

Used for foundations,  
Underground structures such as garages,  
Tunnels and underground passages,  
Waste water and sewage systems,  
Water reservoirs and tanks,  
Concrete walls,  
Waterlines and dams,  
Fractured rock stabilization,  
Blocking the water running from negative direction.

## Advantages:

Excellent adhesion to wet surfaces.  
Applied by the help of a single-component pump. Produces foam by reacting to water. High expansion factor.

Affordable.

Foam production period can be shortened with the help of SUFFIX INJECTION PUR 1K CAT catalyst (accelerator).

## Package:

20 + 2 kg



Phone: +90 232 461 5713

[www.suffix.com.tr](http://www.suffix.com.tr)

[info@suffix.com.tr](mailto:info@suffix.com.tr)

Alkabsan Yapı Sanayi ve Ticaret Anonim Şirketi Kazım Dirik Mh. 375  
Sk. No:18 K.2 D.2 Piramit İş Merkezi Bornova/İZMİR



# SUFFIX INJECTION PUR 1K FLEX

*Flexible, Polyurethane Injection Resin, Single-Component,  
Hydrophobic, Crack Filling Waterproofing Material for Medium-Volume  
Water Leakage Blockage*



## Product Definition:

SUFFIX INJECTION PUR 1K FLEX is a flexible, polyurethane resin-based, single component, hydrophobic injection resin developed to block the water leaking from cracks and pores on concrete surfaces and to fill/hold the cracks and loose formations. It produces a hydrophobic foam with high flexibility and ultra-elasticity by reacting with water used with the addition of a closed-cell catalyst that does not contain CFCs and solvents. Effectively blocks the water leakages by rapidly and thoroughly penetrating into concrete cracks thanks to its low viscosity. Applied by using a single-component injection pump.

## Areas of Application:

Used for foundations,  
Underground structures such as garages,  
Tunnels and underground passages,  
Waste water and sewage systems,  
Water reservoirs and tanks,  
Concrete walls,  
Waterlines and dams,  
Fractured rock stabilization,  
Blocking the water running from negative direction.

## Advantages:

Excellent adhesion to wet surfaces.  
Applied by the help of a single-component pump.  
Produces foam by reacting to water.  
High expansion factor.  
Affordable.  
Foam production period can be shortened  
with the help of SUFFIX INJECTION  
PUR 1K FLEX CAT catalyst (accelerator).

## Package:

SUFFIX INJECTION PUR 1K FLEX:  
20 kg  
SUFFIX INJECTION PUR 1K FLEX CAT.:  
1 kg (Accelerator)



Phone: +90 232 461 5713

[www.suffix.com.tr](http://www.suffix.com.tr)

[info@suffix.com.tr](mailto:info@suffix.com.tr)

Alkatsan Yapı Sanayi ve Ticaret Anonim Şirketi Kazım Dirik Mh. 375  
Sk. No:18 K.2 D.2 Piramit İş Merkezi Bornova/İZMİR



# SUFFIX INJECTION PUR 1K CRACK



*Polyurethane Injection Resin, Single-Component,  
Hydrophobic, Crack Filling Waterproofing Material Used in  
Surface Consolidation for Medium-Volume Water Leakage Blockage*

## Product Definition:

SUFFIX INJECTION PUR 1K CRACK is a single component hard polyurethane resin that does not contain FSUFFIXW and solvents, used for consolidation of soil, tunnel and underground structures, stabilization and hardening of loose rocks, and stopping high pressure water leaks occurring in water structures in infrastructure projects. Its really low viscosity makes it an ideal injection product especially for shear concretes. Applied by using a single-component injection pump.

## Areas of Application:

Used for foundations,  
Underground structures such as garages,  
Tunnels and underground passages,  
Waste water and sewage systems,  
Concrete walls,  
Waterlines and dams,  
Fractured rock stabilization,  
Blocking the water running from negative direction.

## Advantages:

Excellent adhesion to wet surfaces.  
Applied by the help of a single-component pump.  
Produces foam by reacting to water.  
High expansion factor.  
Affordable.

## Package:

SUFFIX INJECTION PUR 1K CRACK:  
20 kg  
SUFFIX INJECTION PUR 1K CRACK  
CAT. :  
1 kg (Accelerator)



Phone: +90 232 461 5713

[www.suffix.com.tr](http://www.suffix.com.tr)

[info@suffix.com.tr](mailto:info@suffix.com.tr)

Alkatsan Yapı Sanayi ve Ticaret Anonim Şirketi Kazım Dirik Mh. 375  
Sk. No:18 K.2 D.2 Piramit İş Merkezi Bornova/İZMİR





# SUFFIX INJECTION PUR 1K RH

*Polyurethane Injection Resin, Single-Component,  
Hydrophobic, Crack Filling Waterproofing Material for  
Medium-Volume Water Leakage Blockage*



## Product Definition:

SUFFIX INJECTION PUR 1K RH is a polyurethane resin-based, single component, CFC and solvent-free, hydrophobic injection resin developed for stopping water leaking from cracks or pores on concrete surfaces, in coastal and offshore building construction works, for filling/fixing cracks and loose formations, floor consolidation, hardening, and waterproofing applications with the addition of catalyst. Applied by using a single-component injection pump.

## Areas of Application:

Used for foundations,  
Underground structures such as garages,  
Tunnels and underground passages,  
Waste water and sewage systems,  
Stopping high pressure and high flow water leaks (including sea water),  
Concrete walls,  
Waterlines and dams,  
Fractured rock stabilization,  
Blocking the water running from  
negative direction.

## Advantages:

Excellent adhesion to wet surfaces.  
Applied by the help of  
a single-component pump.  
Produces foam by reacting to water.  
High expansion factor.  
Affordable.

## Package:

SUFFIX INJECTION PUR 1K RH: 20 kg  
SUFFIX INJECTION PUR 1K RH CAT. :  
1 kg (Accelerator)



Phone: +90 232 461 5713

[www.suffix.com.tr](http://www.suffix.com.tr)

[info@suffix.com.tr](mailto:info@suffix.com.tr)

Alkatsan Yapı Sanayi ve Ticaret Anonim Şirketi Kazım Dirik Mh. 375  
Sk. No:18 K.2 D.2 Piramit İş Merkezi Bornova/İZMİR



# SUFFIX INJECTION PUR 2K CS

*Polyurethane Resin-Based, Two-Component,  
Hydrophobic, Crack Filling and Waterproofing Injection Material*



## Product Definition:

SUFFIX INJECTION PUR 2K CS is a slow-reacting, highly flexible, two-component, polyurethane resin used for filling, waterproofing and flexible bonding of the joints, dilatation, cracks and gaps in reinforced concrete brick or natural stone buildings and other construction structures. It is the only product that can be applied both positively and negatively in areas such as dilatations.

## Areas of Application:

Used in the filling of cracks and dilatation gaps in reinforced concrete structures,  
Waterproofing works of waters leaking from floor or walls,  
Repairing of tunnels, canals and wall structures,  
Injections for permanent waterproofing in historical buildings,  
Hose systems embedded in concrete structures,  
(cold applied joints and dilatations etc.),  
And in various other custom applications.

## Advantages:

Excellent adhesion to wet surfaces.  
Applied by using a two-component pump.  
Produces controlled foam by reacting to water.  
Solvent-free.

## Package:

43 kg set SUFFIX INJECTION PUR 2K CS;  
Component A (Resin): 20 kg metal box  
Component B (Hardener): 23 kg metal box



Phone: +90 232 461 5713

[www.suffix.com.tr](http://www.suffix.com.tr)

[info@suffix.com.tr](mailto:info@suffix.com.tr)

Alkatsan Yapı Sanayi ve Ticaret Anonim Şirketi Kazım Dirik Mh. 375  
Sk. No:18 K.2 D.2 Piramit İş Merkezi Bornova/İZMİR



# SUFFIX INJECTION PUR 2K WL

*Polyurethane Resin-Based, Two-Component,  
Hydrophobic, Crack Filling and Waterproofing Injection Material*



## Product Definition:

SUFFIX INJECTION PUR 2K WL is a two-component, polyurethane injection resin with a moderate reaction time to water. It does not contain FSUFFIXW and halogens, and is used for waterproofing and compaction in water-permeable areas, water-leaking layers, especially against compressed/pressurized water.

## Areas of Application:

In soil consolidation on wet or water-bearing rocks,  
Waterproofing works of waters leaking from floor or walls,  
Repairing of tunnels, canals and wall structures,  
Prevention and stabilization of water leaks in tunnels,  
Reparing of old shafts and tunnels,  
And in various other custom applications.

## Advantages:

Excellent adhesion to wet surfaces.  
Applied by using a two-component pump.  
Produces controlled foam by reacting to water.  
Solvent-free.

## Package:

46 kg set  
SUFFIX INJECTION PUR 2K WL;  
Component A (Resin):  
21 kg metal box  
Component B (Hardener):  
25 kg metal box



Phone: +90 232 461 5713

[www.suffix.com.tr](http://www.suffix.com.tr)

[info@suffix.com.tr](mailto:info@suffix.com.tr)

Alkasan Yapı Sanayi ve Ticaret Anonim Şirketi Kazım Dirik Mh. 375  
Sk. No:18 K.2 D.2 Piramit İş Merkezi Bornova/İZMİR



# SUFFIX INJECTION PUR 2K WS

*Polyurethane Resin-Based, Two-Component,  
Hydrophobic, Crack Filling and Waterproofing Injection Material*



## Product Definition:

SUFFIX INJECTION PUR 2K WS is a two-component, polyurethane injection resin with instant reaction time to water. It does not contain FCKW and halogens, and is used for waterproofing and compaction in water-permeable areas, water-leaking layers, especially against compressed/pressurized water.

## Areas of Application:

In soil consolidation on wet or water-bearing rocks,  
Waterproofing works of waters leaking from floor or walls,  
Repairing of tunnels, canals and wall structures,  
Prevention and stabilization of water leaks in tunnels,  
Repairing of old shafts and tunnels,  
And in various other custom applications.

## Advantages:

Excellent adhesion to wet surfaces.  
Applied by using a two-component pump.  
Produces controlled foam by reacting to water.  
Solvent-free.

## Package:

46 kg set  
SUFFIX INJECTION PUR 2K WS;  
Component A (Resin):  
21 kg metal box  
Component B (Hardener):  
25 kg metal box



Phone: +90 232 461 5713

[www.suffix.com.tr](http://www.suffix.com.tr)

[info@suffix.com.tr](mailto:info@suffix.com.tr)

Alkasan Yapı Sanayi ve Ticaret Anonim Şirketi Kazım Dirik Mh. 375  
Sk. No:18 K.2 D.2 Piramit İş Merkezi Bornova/İZMİR



# SUFFIX INJECTION PUR 2K

*Polyurethane Injection Resin-Based, Two-Component, Hydrophobic, Crack Filling and Waterproofing Material*



## Product Description:

SUFFIX INJECTION PUR 2K is a two-component, polyurethane injection resin very quickly reacting when encountering water. Forms a structure in high mechanical characteristics with a slight foaming as a result of a reaction.

## Areas of Application:

Building foundations  
Tunnels  
Dams  
Water channels

## Advantages:

Excellent adhesion to wet surfaces. Applied by using a two-component pump. Produces controlled foam by reacting to water.  
Affordable.  
Solvent-free.

## Package

44 kg sets in proportion to component A (resin) and component B (hardener)





---

**Repair Group**

---

# SUFFIX PU SEAL BT2K 10

*Polyurethane-Based, Two-Component  
Bitumen-Modified Joint Filling Material*



## Product Definition:

SUFFIX PU SEAL BT2K 10 is a two-component, bitumen polyurethane-based joint filling material. Cured with moisture in the air and chemical reaction. Forms a quite elastic and durable film by perfectly adhering to different surfaces. In excellent mechanical and chemical characteristics; provides high tension, tearing and wearing resistance. Resistant to heavy traffic and surface movements. Resistant to sea water, jet fuels, hydraulic materials and oils.

## Areas of Application:

Used for Airport runways, aprons and hangars, Oil and fuel-resistant applications, Highways, bridges and viaducts, Roads and concrete areas of petrochemical and other industrial areas, Track laying, Filling of horizontal joints, Filling of horizontal and vertical junctions between construction components, Industrial floors, Indoor and outdoor spaces open to pedestrian and traffic, Ground fuel tanks and loading ramps, floor and junction joints, Junction joints of concrete elements with bitumen coatings, Cracks on asphalt and concrete roads.

## Advantages:

Perfectly adhesive to almost all types of surfaces, Perfectly spreading in different climatic conditions and various temperatures, opportunity to be formed by tools and retain its form. Excellent chemical resistance. Suitable for

water tanks in chemical industry, 50% adaptable to joint movement. Resistant to microorganisms and fungus. Resistant to cold; Retains its elasticity up to -40°C, Suitable for painting applications, Resistant to jet fuel, oil and various chemical solutions.

## Package:

12 kg set SUFFIX PU SEAL BT2K10;  
Component A: 10 kg metal can bucket  
Component B: 2 kg metal can bucket



# SUFFIX EP REPAIR BOND

*Epoxy-Based Two-Component, Thixotropic Repair, Anchorage and Adhesive Mortar*



## Product Definition:

SUFFIX EP REPAIR BOND is a two-component, solvent-free, thixotropic, pasty, high-strength adhesion, anchorage, assembly and filling mortar.

## Areas of Application:

Used for fixing of injection packers,  
Placement of iron stone on concrete and stone walls,  
Anchoring,  
Adhesion of different types of materials, Assembly and adhesion of metal and steel components to concrete elements,  
Repair of concrete,  
Fixing of bridge and viaduct rails, Anchorage of bolts and pins,  
Adhesion of dilation and bevelling bands.

## Advantages:

High mechanical endurance.  
High abrasion resistance.  
Easy-to-apply thanks to its pasty characteristics.  
Provides earlier resistance.  
Provides hardening without shrinking.  
Suitable for overhead applications.  
Perfectly adhesive to concrete and steel.  
Resistant to chemicals.

## Package:

5 kg set SUFFIX EP REPAIR BOND;  
Component A: 3.75 kg metal can bucket  
Component B: 1.25 kg metal can bucket

## Consumption:

1.60 kg/m<sup>2</sup> for 1 mm thickness



Phone: +90 232 461 5713

[www.suffix.com.tr](http://www.suffix.com.tr)

[info@suffix.com.tr](mailto:info@suffix.com.tr)

Alkatsan Yapı Sanayi ve Ticaret Anonim Şirketi Kazım Dirik Mh. 375  
Sk. No:18 K.2 D.2 Piramit İş Merkezi Bornova/İZMİR





# SUFFIX PU SEAL 35 F

*Polyurethane-Based, Single-Component Joint Filling Material*



## Product Definition:

SUFFIX PU SEAL 35 F is a single-component, polyurethane-based joint filling material. Cured with moisture in the air. Forms a quite elastic and durable structure by perfectly adhering to different surfaces. In excellent mechanical and chemical characteristics; provides high tension, tearing and wearing resistance. Contains pure elastomeric, hydrophobic polyurethane resin and special inorganic admixture materials. Easy-to-apply as it is a single-component material.

## Areas of Application:

Used for filling of horizontal and vertical joints,  
Filling of horizontal and vertical junctions between constructional components,  
Industrial floors,  
Indoor and outdoor spaces open to pedestrian and traffic.

## Advantages:

Perfectly adhesive to almost all types of surfaces. Perfectly leveling in different climatic conditions and various temperatures, opportunity to be formed by tools and retain its form. Excellent chemical resistance. Suitable for water tanks and swimming pools processed by chemicals. 50% adaptable to joint movement. Resistant to microorganisms and fungus. Underwater dipping/sinking is applicable. Excellent heat resistance, allows application even at temperatures up to  $>60^{\circ}\text{C}$ . Resistant to cold; Retains its elasticity up to  $-40^{\circ}\text{C}$ , Suitable for painting applications,

## Package:

600 ml Sausage (20 pcs / pck)



Phone: +90 232 461 5713

[www.suffix.com.tr](http://www.suffix.com.tr)

[info@suffix.com.tr](mailto:info@suffix.com.tr)

Alkasan Yapı Sanayi ve Ticaret Anonim Şirketi Kazım Dirik Mh. 375  
Sk. No:18 K.2 D.2 Piramit İş Merkezi Bornova/İZMİR





---

**Floor Group**

---

# SUFFIX FLOOR EP SF

*Solvent-Free, Epoxy-Based, Two-Component Coating Material*



## Product Definition:

SUFFIX FLOOR EP SF is an epoxy-based, solvent-free, two-component coating material developed for the protection of concrete and steel.

## Areas of Application:

Indoor areas, horizontal and vertical applications,  
Metal or concrete tanks,  
Walls as gas and vapor barrier coating resistant to chemical materials,  
Oil and fuel tanks,  
Power plants, sugar factories, hangars and liquid storage spaces,  
Potable water reservoirs, Petroleum refineries and paper factories,  
Food, Medicine, paint, paper, battery and fertilizer industry, Print shops, hotel kitchens and laundries, Hospital laboratories, dining halls, wet areas and hygienic environments.

## Advantages:

Shiny surface. Antibacterial. Provides anti-bacterial surface structure. Provides hygienic environment as it is easy-to-clean. High mechanical resistance. Capable of absorbing movements on metal surfaces thanks to its elasticity.

Highly resistant to chemicals when compared to standard epoxy coatings.

Easy-to-apply by using a brush, roll or spraying. Water-resistant. Solvent-free.

Suitable for potable water reservoirs.

## Package:

23.5 kg set SUFFIX FLOOR EP SF;  
Component B: 20 kg can bucket  
Component B: 3.5 kg can bucket

## Consumption:

Total consumption is  
0.40-0.80 kg/m<sup>2</sup>.



Phone: +90 232 461 5713

[www.suffix.com.tr](http://www.suffix.com.tr)

[info@suffix.com.tr](mailto:info@suffix.com.tr)

Alkatsan Yapı Sanayi ve Ticaret Anonim Şirketi Kazım Dirik Mh. 375  
Sk. No:18 K.2 D.2 Piramit İş Merkezi Bornova/İZMİR



# SUFFIX FLOOR PUR SL

*Polyurethane Resin-based, Two-component, Solvent-free,  
Semi-flexible, Self-levelling, Colored Floor Coating Material*



## Product Definition:

It is a polyurethane resin-based, two-component, solvent-free, semi-flexible, self-levelling, colored floor coating material.

## Areas of Application:

Used for industrial kitchens, chicken production farms and slaughter houses where hygienic conditions are significant,  
Schools and hospitals, labs, Shopping malls and markets,  
Food processing plants and storehouses,  
Chemical and drug production industry,  
Precast and prefabricated structures, coating systems on mezzanine floors where elasticity is significant.

## Advantages:

Provides a monolithic floor not requiring joint filling.  
Easy-to-clean to provide a hygienic environment.  
High wearing resistance.  
Provides crack bridging and a semi-elastic coating film.  
Directly applicable as undercoating or coating on asphalt.

## Package:

19 kg set SUFFIX FLOOR PUR SL

Component A: 15 kg

Component B: 4 kg



Phone: +90 232 461 5713

[www.suffix.com.tr](http://www.suffix.com.tr)

[info@suffix.com.tr](mailto:info@suffix.com.tr)

Alkatsan Yapı Sanayi ve Ticaret Anonim Şirketi Kazım Dirik Mh. 375  
Sk. No:18 K.2 D.2 Piramit İş Merkezi Bornova/İZMİR



# SUFFIX FLOOR EP SL

*Epoxy-Based, Self-Levelling Floor Coating*



## Product Definition:

SUFFIX FLOOR EP SL is a epoxy-based, smooth-finish, easy-to-clean, self-levelling floor system designed for industrial floors.

## Areas of Application:

Used as coating material for Concrete and cement-based surfaces,  
Storehouses,  
Production plants,  
Shopping malls, Hangars,  
Exhibition and fair areas,  
Parking lots.

## Advantages:

High mechanical endurance.  
Excellently applicable for sand-finish or sand-free surfaces  
thanks to its self-levelling characteristics.  
High abrasion resistance. Easy application.  
Easy cleaning and maintenance.

## Package:

24 kg set SUFFIX FLOOR EP SL;  
Component A: 20 kg metal can bucket  
Component B: 4 kg metal can bucket

## Consumption:

Consumption varies between  
1 - 3 kg/m<sup>2</sup> depending on the  
system solutions.



Phone: +90 232 461 5713

[www.suffix.com.tr](http://www.suffix.com.tr)

[info@suffix.com.tr](mailto:info@suffix.com.tr)

Alkatsan Yapı Sanayi ve Ticaret Anonim Şirketi Kazım Dirik Mh. 375  
Sk. No:18 K.2 D.2 Piramit İş Merkezi Bornova/İZMİR



# SUFFIX FLOOR EP TC

*Epoxy-Based, Top Coating Applied by a Roller*



## Product Definition:

SUFFIX FLOOR EP TC is a two-component, solvent, smooth-finish, easy-to-apply top coating material designed for industrial floors that provides anti-slip surface.

## Areas of Application:

Used as coating material for Concrete and cement-based surfaces, Storehouses, Production plants, Shopping malls, Hangars, Exhibition and fair areas, Parking lots.

## Advantages:

High mechanical endurance. Liquid-proof.  
Bright-finish. Easy application.  
Easy cleaning and maintenance.  
Provides anti-slip surface.

## Package:

22 kg set SUFFIX FLOOR EP TC;  
Component A: 20 kg metal can bucket  
Component B: 2 kg metal can bucket

## Consumption:

0.30 – 0.50 kg/m<sup>2</sup>



Phone: +90 232 461 5713

[www.suffix.com.tr](http://www.suffix.com.tr)

[info@suffix.com.tr](mailto:info@suffix.com.tr)

Alkatsan Yapı Sanayi ve Ticaret Anonim Şirketi Kazım Dirik Mh. 375  
Sk. No:18 K.2 D.2 Piramit İş Merkezi Bornova/İZMİR



# SUFFIX FLOOR EP TXT

*Epoxy-Based, Thixotropic, Orange Peel Surface Top Coat*



## Product Definition:

SUFFIX FLOOR EP TXT is a two-component, solvent, easy-to-use orange peel surface-like, easy-to-clean thixotropic top coat floor coating material designed for industrial floors.

## Areas of Application:

Used as coating material for Concrete and cement-based surfaces, Storehouses, Production areas, Hangars, Exhibition and fair areas, Parking lots.

## Advantages:

High mechanical endurance. High abrasion resistance. Liquid-proof. Bright-finish. Easy application. Easy cleaning and maintenance. Provides anti-slip surface.

## Package:

22 kg set SUFFIX FLOOR EP TXT;  
Component A: 20 kg metal can bucket  
Component B: 2 kg metal can bucket

## Consumption:

0.50 - 0.70 kg/m<sup>2</sup>



Phone: +90 232 461 5713

[www.suffix.com.tr](http://www.suffix.com.tr)

[info@suffix.com.tr](mailto:info@suffix.com.tr)

Alkatsan Yapı Sanayi ve Ticaret Anonim Şirketi Kazım Dirik Mh. 375  
Sk. No:18 K.2 D.2 Piramit İş Merkezi Bornova/İZMİR



# SUFFIX FLOOR EP TXT-SF

*Epoxy-Based, Solvent-Free, Thixotropic,  
Orange Peel Surface Surface Top Coat*



## Product Definition:

SUFFIX FLOOR EP TXT-SF is a two-component, solvent-free, easy-to-use, orange peel surface-like, easy-to-clean thixotropic top coat floor coating material designed for industrial floors.

## Areas of Application:

Used as coating material for Concrete and cement-based surfaces,  
Storehouses,  
Production areas, Hangars  
Exhibition and fair areas,  
Parking lots.

## Advantages:

High mechanical endurance. High abrasion resistance. Liquid-proof.  
Bright-finish. Easy application.  
Easy cleaning and maintenance. Provides anti-slip surface.

## Package:

23.50 kg set SUFFIX FLOOR EP TXT-SF;  
Component A: 20.00 kg metal can bucket  
Component B: 3.50 kg metal can bucket

## Consumption:

0.50 - 0.70 kg/m<sup>2</sup>



Phone: +90 232 461 5713

[www.suffix.com.tr](http://www.suffix.com.tr)

[info@suffix.com.tr](mailto:info@suffix.com.tr)

Alkatsan Yapı Sanayi ve Ticaret Anonim Şirketi Kazım Dirik Mh. 375  
Sk. No:18 K.2 D.2 Piramit İş Merkezi Bornova/İZMİR





# SUFFIX FLOOR EP GUARD TC

*Epoxy-Based, Two-Component,  
Protective Coating*



## Product Definition:

SUFFIX FLOOR EP GUARD TC is an epoxy-based, solvent-free, two-component, protective coating material. When cured, SUFFIX FLOOR EP GUARD TC forms a hard and glossy film with high abrasion and chemical resistances.

## Areas of Application:

High abrasion resistance.

Suitable for use in low and moderately aggressive chemical environments.

Suitable for use on concrete, stone, cement-based mortar coated, epoxy and steel surfaces.

It can be used as a coating in stock tanks and silos, in areas that have risk of contact with chemical materials, and in waste water tanks.

## Advantages:

Solvent-free

Has high chemical and mechanical resistance.

Easy to mix and apply. High volume added.

Forms a layer impermeable to liquids.

## Package:

25 kg sets;

Component A: 20 kg metal can bucket

Component B: 5 kg metal can bucket

## Consumption:

Total consumption amount is

0.90 - 1.50 kg/m<sup>2</sup>.



Phone: +90 232 461 5713

[www.suffix.com.tr](http://www.suffix.com.tr)

[info@suffix.com.tr](mailto:info@suffix.com.tr)

Alkabsan Yapı Sanayi ve Ticaret Anonim Şirketi Kazım Dirik Mh. 375  
Sk. No:18 K.2 D.2 Piramit İş Merkezi Bornova/İZMİR



# SUFFIX EP GUARD SL

*Epoxy-Based, Self-Leveling Floor Coating  
with High Chemical Resistance*



## Product Definition:

SUFFIX EP GUARD SL epoxy resin-based, two-component, solvent-free, self-leveling, highly chemical-resistant colored floor coating material that is applied as multilayers or as single thin layer.

## Areas of Application:

On concrete, cement or epoxy mortars, for all industrial floorings where high chemical and water resistance is required,  
In epoxy multilayer systems applied in chemical production and storage/  
packaging areas with forklift, loader and other heavy vehicle traffic,  
It is mixed with quartz sand or a different filling material and used in many areas requiring mechanical resistance and wearing resistance on floors exposed to moderate to heavy load.

## Advantages:

High chemical resistance,  
High mechanical resistance,  
Excellent applicability for sand-finish  
or sand-free surfaces thanks to its  
self-levelling characteristics,  
High wearing resistance,  
Easy-to-apply,  
Easy cleaning and maintenance.  
Forms a layer impermeable to liquids.

## Package:

25 kg sets;  
Component A: 20 kg metal can bucket  
Component B: 5 kg metal can bucket



Phone: +90 232 461 5713

[www.suffix.com.tr](http://www.suffix.com.tr)

[info@suffix.com.tr](mailto:info@suffix.com.tr)

Alkasan Yapı Sanayi ve Ticaret Anonim Şirketi Kazım Dirik Mh. 375  
Sk. No:18 K.2 D.2 Piramit İş Merkezi Bornova/İZMİR



# SUFFIX EP GUARD TXT

*Epoxy-Based, Thixotropic, Orange Peel Surface-Like Protective Coating*



## Product Definition:

SUFFIX EP GUARD TXT is a two-component, easy-to-apply, orange peel surface-like, thixotropic protective coating material with high chemical resistance.

## Areas of Application:

Suitable for low and medium-degree aggressive chemical environments, Concrete, stone, cement-based mortar-coated, epoxy and steel surfaces, Waste water tanks, and environments bearing the risk of contact with chemical materials.

## Advantages:

High mechanical and chemical resistance.

Liquid-proof.

Bright-finish.

Easy application.

## Package:

25 kg sets;

Component A: 20 kg metal can bucket

Component B: 5 kg metal can bucket



Phone: +90 232 461 5713

[www.suffix.com.tr](http://www.suffix.com.tr)

[info@suffix.com.tr](mailto:info@suffix.com.tr)

Alkatsan Yapı Sanayi ve Ticaret Anonim Şirketi Kazım Dirik Mh. 375  
Sk. No:18 K.2 D.2 Piramit İş Merkezi Bornova/İZMİR



# SUFFIX FLOOR EP CONDUCTIVE

*Electrostatically Conductive Intercoating Material*



## Product Definition:

SUFFIX FLOOR EP CONDUCTIVE is an epoxy resin-based, two-component, low viscosity, intercoating material for antistatic floor coating systems.

## Areas of Application:

It is used to achieve electrostatically conductive surface coating on concrete and cement floors.

## Advantages:

Electrostatically conductive.

## Package:

16.50 kg set SUFFIX FLOOR EP CONDUCTIVE;

Component A: 15 kg

Component B: 1.50 kg



Phone: +90 232 461 5713

[www.suffix.com.tr](http://www.suffix.com.tr)

[info@suffix.com.tr](mailto:info@suffix.com.tr)

Alkabsan Yapı Sanayi ve Ticaret Anonim Şirketi Kazım Dirik Mh. 375  
Sk. No:18 K.2 D.2 Piramit İş Merkezi Bornova/İZMİR



# SUFFIX FLOOR EP AS

*Epoxy-Based, Self-Leveling, Anti-Static,  
Conductive Floor Coating*



## Product Definition:

SUFFIX FLOOR EP AS is an epoxy resin-based, two-component, solvent-free, low-viscosity, non-fading decorative floor coating material providing thick coating in single application.

## Areas of Application:

It is used to achieve electrostatically conductive surface coating on concrete and cement floors.

It can be used alone as described in the application section on surfaces subject to moderate mechanical loads.

On surfaces subject to heavy mechanical load, it is used as a finishing coat after the concrete surface is prepared with load bearing epoxy layers (mortar, multilayer, etc.) as described in the application section.

## Advantages:

Electrostatically conductive.

Forms shiny surfaces with an aesthetically pleasing appearance.

Has high mechanical and chemical resistance.

## Package:

24 kg set SUFFIX FLOOR EP AS;

Component A: 20 kg

Component B: 4 kg



Phone: +90 232 461 5713

[www.suffix.com.tr](http://www.suffix.com.tr)

[info@suffix.com.tr](mailto:info@suffix.com.tr)

Alkatsan Yapı Sanayi ve Ticaret Anonim Şirketi Kazım Dirik Mh. 375  
Sk. No:18 K.2 D.2 Piramit İş Merkezi Bornova/İZMİR



# SUFFIX FLOOR EP TERRAZO



*Solvent-Free, Epoxy-Based,  
Self-Leveling, Colored, Decorative Coating Material*

## Product Definition:

SUFFIX FLOOR EP TERRAZO is an epoxy resin-based, two-component, solvent-free, low-viscosity and self-leveling, highly glossy and wear-resistant, colored floor coating material used as a multi-layer or thin layer coating.

## Areas of Application:

On concrete, cement or epoxy mortars, for all industrial floorings,  
In areas where visibility is important such as stores, show-rooms, laboratories,  
In areas with heavy pedestrian traffic such as schools, shopping malls, entertainment centers, hotels,  
It is used in many areas requiring mechanical resistance and wearing resistance on floors exposed to moderate and heavy load.

## Advantages:

Solvent-free, low viscosity, flexible structure,  
Decorative appearance,  
High pressure and abrasion resistance,  
Easy to clean and resistance to chemicals.

## Package:

20 kg set SUFFIX FLOOR EP TERRAZO;  
Component B: 16 kg can bucket  
Component B: 4 kg can bucket

## Consumption:

Consumption may vary based on the system solution.



Phone: +90 232 461 5713

[www.suffix.com.tr](http://www.suffix.com.tr)

[info@suffix.com.tr](mailto:info@suffix.com.tr)

Alkatsan Yapı Sanayi ve Ticaret Anonim Şirketi Kazım Dirik Mh. 375  
Sk. No:18 K.2 D.2 Piramit İş Merkezi Bornova/İZMİR



# SUFFIX FLOOR STONE BINDER PUR 1K

*Epoxy Resin-Based Decorative Stone Binder*



## Product Definition:

It is a single-component, aliphatic, solvent-free, transparent, polyurethane resin-based, decorative stone adhesive with high yellowing resistance which is cured with moisture.

## Areas of Application:

By mixing with natural aggregate, marble, natural stone and quartz (2-4 or 4-8 mm), used for indoor and outdoor decorative self-drained floor coating;  
Garage entrances, yards and pavements,  
Terraces and balconies,  
Arcades,  
Decorative self-drained surfaces around swimming pools,  
Exhibition and performance hall, warehouse floors.

## Advantages:

Solvent-free,  
High adhesive strength,  
High yellowing resistance,  
Easy-to-use as it is single-component,  
Resistant to water and external conditions,

## Package:

NET: 25 kg BUCKET and 200 kg BARREL.



Phone: +90 232 461 5713

[www.suffix.com.tr](http://www.suffix.com.tr)

[info@suffix.com.tr](mailto:info@suffix.com.tr)

Alkatsan Yapı Sanayi ve Ticaret Anonim Şirketi Kazım Dirik Mh. 375  
Sk. No:18 K.2 D.2 Piramit İş Merkezi Bornova/İZMİR



## SUFFIX FLOOR STONE BINDER PUR

*Aliphatic Polyurethane Resin-Based Two-Component  
Decorative Stone Binder*



### Product Definition:

It is a two-component, aliphatic, solvent-free, transparent, polyurethane resin-based decorative stone adhesive that cures through moisture and chemical reaction.

### Areas of Application:

By mixing with natural aggregate, marble, natural stone and quartz (2-4 or 4-8 mm), used for indoor and outdoor decorative self-drained floor coating;  
Garage entrances, yards and pavements,  
Terraces and balconies,  
Arcades,  
Decorative self-drained surfaces around swimming pools,  
Exhibition and performance hall, warehouse floors.

### Advantages:

Solvent-free,  
High adhesive strength,  
High yellowing resistance,  
Resistant to water and external conditions,

### Package:

20 kg set SUFFIX FLOOR STONE  
BINDER PUR;  
Component A: 10 kg  
Component B: 10 kg.

### Consumption:

1.00 - 1.75 kg/m<sup>2</sup> consumption may  
vary based on aggregate - resin usage  
ratio depending on system solution.



Phone: +90 232 461 5713

[www.suffix.com.tr](http://www.suffix.com.tr)

[info@suffix.com.tr](mailto:info@suffix.com.tr)

Alkasan Yapı Sanayi ve Ticaret Anonim Şirketi Kazım Dirik Mh. 375  
Sk. No:18 K.2 D.2 Piramit İş Merkezi Bornova/İZMİR





# SUFFIX FLOOR STONE BINDER EP

*Epoxy Resin-Based Decorative Stone Binder*



## Product Definition:

SUFFIX FLOOR STONE BINDER EP, is an epoxy resin-based, two-component, transparent and solvent-free, low viscosity, UV-resistant resin system used in the production of decorative flooring with suitable aggregates.

## Areas of Application:

By mixing with natural aggregate, marble, natural stone and quartz, used for indoor and outdoor decorative self-drained floor coating; Garage entrances, yards and pavements, Terraces and balconies, Arcades, Decorative self-drained surfaces around swimming pools, Exhibition and performance hall, warehouse floors.

## Advantages:

Solvent-free,  
High adhesive strength,  
High yellowing resistance,  
Resistant to water and external conditions,

## Package:

14 kg set SUFFIX FLOOR STONE BINDER EP;  
Component A: 10 kg  
Component B: 4 kg.



Phone: +90 232 461 5713

[www.suffix.com.tr](http://www.suffix.com.tr)

[info@suffix.com.tr](mailto:info@suffix.com.tr)

Alkasan Yapı Sanayi ve Ticaret Anonim Şirketi Kazım Dirik Mh. 375  
Sk. No:18 K.2 D.2 Piramit İş Merkezi Bornova/İZMİR



## SUFFIX FLOOR STONE PORE FILLER AC



*Acrylic-Polyurethane, Modified, Single-Component,  
Decorative Stone Filling Material*

### Product Definition:

It is a single-component, high yellowing resistance, aliphatic, high viscosity, transparent filling material that forms an impermeable film layer.

### Areas of Application:

As a filling material in stone carpet systems made using natural stone, colored quartz, colored glass, etc. aggregates.

### Advantages:

Solvent-free,  
High yellowing resistance,  
Easy-to-use as it is single-component,  
Protects against surface abrasion.

### Package:

NET: 15 kg plastic can packaging

### Consumption:

1.00 - 1.75 kg/m<sup>2</sup> consumption may vary based on aggregate - resin usage ratio depending on system solution.



Phone: +90 232 461 5713

[www.suffix.com.tr](http://www.suffix.com.tr)

[info@suffix.com.tr](mailto:info@suffix.com.tr)

Alkatsan Yapı Sanayi ve Ticaret Anonim Şirketi Kazım Dirik Mh. 375  
Sk. No:18 K.2 D.2 Piramit İş Merkezi Bornova/İZMİR



# SUFFIX FLOOR EP 3D

*Epoxy-Resin Based Transparent Decorative Coating Material*



## Product Definition:

SUFFIX FLOOR 3D EP is an epoxy resin-based, two-component, solvent-free, low-viscosity, non-fading decorative floor coating material providing thick coating in single application.

## Areas of Application:

Used as 3D decorative coating directly applied on concrete cement-finish surfaces or on images applied on cement-finish surfaces, As decorative and protective coating after the epoxy or polyurethane mortar, self-leveling, terrazo applications, As moisture, wearing and chemical-resistant protective coating on floors made of composite panels such as precast concrete panel, MDF etc.

## Advantages:

Up to 3 mm of thickness in single application,  
Excellent spread and adhesion on varied surfaces  
High interior and exterior yellowing resistance  
Good chemical and water resistance,  
Resistance to high pressure and abrasion.

## Package:

15 kg set SUFFIX FLOOR EP 3D;

Component A:

10 kg metal can bucket

Component B:

5 kg metal can bucket



Phone: +90 232 461 5713

[www.suffix.com.tr](http://www.suffix.com.tr)

[info@suffix.com.tr](mailto:info@suffix.com.tr)

Alkatsan Yapı Sanayi ve Ticaret Anonim Şirketi Kazım Dirik Mh. 375  
Sk. No:18 K.2 D.2 Piramit İş Merkezi Bornova/İZMİR



# SUFFIX FLOOR PU PROTECTOR HG

*Aliphatic Polyurethane Transparent Protective Varnish*



## Product Definition:

SUFFIX FLOOR PU PROTECTOR HG is a polyurethane-resin based, two-component, low-viscosity, and transparent coating material with high UV resistance.

## Areas of Application:

On epoxy or polyurethane floor coatings,  
On PVC, ceramic and marble floor coverings,  
On coverings such as decorative exterior stone cladding etc., On floor and vertical coverings of hygienic environments such as hospitals, laboratories and food-related establishments,  
It is used as easy-to-clean, chemical- and abrasion-resistant protective top coat varnish.

## Advantages:

Low-viscosity,  
Flexible,  
High adhesion ability,  
High UV resistance,  
Good chemical resistance,  
High wearing resistance,

## Package:

SUFFIX FLOOR PU PROTECTOR:

11.50 kg set

Component A:

10 kg metal can bucket

Component B:

1.50 kg metal box



Phone: +90 232 461 5713

[www.suffix.com.tr](http://www.suffix.com.tr)

[info@suffix.com.tr](mailto:info@suffix.com.tr)

Alkatsan Yapı Sanayi ve Ticaret Anonim Şirketi Kazım Dirik Mh. 375  
Sk. No:18 K.2 D.2 Piramit İş Merkezi Bornova/İZMİR



# SUFFIX FLOOR PU PROTECTOR MATT

*Aliphatic Polyurethane Transparent Protective Matt Varnish*



## Product Definition:

SUFFIX FLOOR PU PROTECTOR MATT is a polyurethane-resin based, two-component, low-viscosity, and transparent coating material with high UV resistance.

## Areas of Application:

On epoxy or polyurethane floor coatings,  
On PVC, ceramic and marble floor coverings,  
On coverings such as decorative exterior stone cladding etc.,  
On floor and vertical coverings of hygienic environments such as hospitals, laboratories and food-related establishments,  
It is used as easy-to-clean, chemical- and abrasion-resistant protective top coat varnish.

## Advantages:

Low-viscosity, Flexible,  
High adhesion ability,  
High UV resistance,  
Good chemical resistance,  
High wearing resistance,

## Package:

SUFFIX FLOOR  
PU PROTECTOR MATT:  
11.50 kg set  
Component A:  
10.00 kg metal can bucket  
Component B:  
1.50 kg metal box



Phone: +90 232 461 5713

[www.suffix.com.tr](http://www.suffix.com.tr)

[info@suffix.com.tr](mailto:info@suffix.com.tr)

Alkabsan Yapı Sanayi ve Ticaret Anonim Şirketi Kazım Dirik Mh. 375  
Sk. No:18 K.2 D.2 Piramit İş Merkezi Bornova/İZMİR



# SUFFIX FLOOR WB TC

*Water-Based, Epoxy-Resin Based, Colored Topcoat Material*



## Product Definition:

SUFFIX FLOOR WB TC is an epoxy resin-based, two-component, diluted-in-water, odorless, colored indoor floor/wall paint used as the smooth, glossy-looking topcoat of paint systems designed as multi-layer or thin coating.

## Areas of Application:

Can be used safely in the production and storage areas of textile, paper and cigarette factories where dusting is not desired in the concrete but has a high humidity environment, In places with light human traffic where decorative and odorless application is important such as hotels etc, On the walls of businesses that requires constant cleaning; on the walls of industrial kitchens - beverage industry - slaughterhouses -- fish and meat industry - canning and sauce production facilities.

## Advantages:

Compared to other epoxy top coat paints, has excellent resistance to abrasion and color/gloss change over time, Solvent-free, odorless, suitable for use in the food industry, Easy-to-apply, provides a smooth and shiny surface, Dries quickly; the application area can be opened to light traffic 12 hours after application, Adheres firmly to all old mineral-based

coatings and epoxy, polyurethane and polyurea floor systems. Applicable at low temperature and in very humid environments, Excellent resistance to all household chemicals and industrial detergents.

## Package:

12.5 kg set SUFFIX FLOOR WB TC;  
Component A: 10 kg plastic can packaging  
Component B: 2.50 kg plastic can packaging

## Consumption:

0.20 – 0.60 kg/m<sup>2</sup> Consumption may vary depending on the system solution.



# SUFFIX FLOOR PURCOAT SP

*High Performance Polyurethane Concrete Coating  
Resistant to Medium - Heavy Loads*



## Product Definition:

SUFFIX FLOOR PURCOAT SP is a polyurethane resin-based, three-component, solvent-free, colored coating material developed for single-coat, thick industrial floor applications with excellent resistance to aggressive chemicals that requires no joint filling.

It is a durable, resistant, ideal coating material intended for food, drug and production industry that provides smooth-finish surfaces.

## Areas of Application:

Drug and food production and processing areas, industrial kitchens, Chicken production farms and slaughter houses, Cold storage depots, All wet process areas, Textile, ready-to-wear, cosmetics, electrical equipment production areas, storehouses, Other industrial production facilities, Chemical production plants.

## Advantages:

Resistant to high impact, load and thermal shock,  
Resistant to wide-range chemicals,  
Easy-to-clean, healthy surface,  
Colorful, mosaic-like, decorative surfaces,  
4-9 mm application in a single layer,  
Easy maintenance,  
Adhesion resistance higher than tensile strength. Collapse occurs in concrete first.  
Its coefficient of thermal expansion similar

to concrete allows it to move with the surface in normal thermal cycle. Keeps its physical characteristics and performance at temperatures between -40 °C and +120 °C.

## Package:

30 kg set SUFFIX FLOOR PURCOAT SP;  
SUFFIX FLOOR PURCOAT SP

### Component A:

5 kg plastic packaging  
SUFFIX FLOOR PURCOAT SP

### Component B:

5 kg plastic packaging  
SUFFIX FLOOR PURCOAT SP

### Component C:

AGGREGATE – CEMENT mixture in 20kg kraft bags.



Phone: +90 232 461 5713

[www.suffix.com.tr](http://www.suffix.com.tr)

[info@suffix.com.tr](mailto:info@suffix.com.tr)

Alkasan Yapı Sanayi ve Ticaret Anonim Şirketi Kazım Dirik Mh. 375  
Sk. No:18 K.2 D.2 Piramit İş Merkezi Bornova/İZMİR



# SUFFIX FLOOR PURCOAT HP

*High Performance High Polyurethane Modification  
Concrete Coating Resistant to Medium - Heavy Loads*



## Product Definition:

SUFFIX PURCOAT is a polyurethane resin-based, three-component, solvent-free, colored coating material developed for single-coat, thick industrial floor applications with excellent resistance to aggressive chemicals that requires no joint filling. It is a durable, resistant, ideal coating material intended for food, drug and production industry that provides smooth-finish surfaces.

## Areas of Application:

Drug and food production and processing areas, industrial kitchens, Chicken production farms and slaughter houses, Cold storage depots, All wet process areas, Textile, ready-to-wear, cosmetics, electrical equipment production areas, storehouses, Other industrial production facilities, Chemical production plants.

## Advantages:

Resistant to high impact, load and thermal shock,  
Resistant to wide-range chemicals,  
Easy-to-clean, healthy surface,  
Colorful, mosaic-like, decorative surfaces, 4-9 mm application in a single layer,  
Odour-free in application,  
Easy maintenance,  
Adhesion resistance higher than tensile strength. Collapse occurs in concrete first. Its coefficient of thermal expansion similar to concrete allows

it to move with the surface in normal thermal cycle.

Keeps its physical characteristics and performance at temperatures between -40 °C and +120 °C.

## Package:

22 kg set  
SUFFIX FLOOR PURCOAT HP;  
SUFFIX FLOOR PURCOAT  
Component A: 10 kg plastic package  
SUFFIX FLOOR PURCOAT  
Component B: 2 kg plastic package  
SUFFIX FLOOR PURCOAT  
Component C: AGGREGATE mixture  
in 10 kg kraft bags.



Phone: +90 232 461 5713

[www.suffix.com.tr](http://www.suffix.com.tr)

[info@suffix.com.tr](mailto:info@suffix.com.tr)

Alkatsan Yapı Sanayi ve Ticaret Anonim Şirketi Kazım Dirik Mh. 375  
Sk. No:18 K.2 D.2 Piramit İş Merkezi Bornova/İZMİR







---

**Sports Floor Group**

---

# SUFFIX PUR SL FLEX

*Polyurethane Flexible Floor Coating*



## Product Definition:

It is the polyurethane resin-based, two-component, solvent-free, self-levelling colored floor coating material used as multilayer or fine-layer solid floor coating.

## Areas of Application:

Used as 1-3 mm self-leveling coating in sports fields,  
In exhibition and fair areas, offices etc. exposed to light traffic, As  
flexible bearing intermediate coat of floor coating systems in hospitals,  
polyclinics, labs, parking lots, daycare centers, chicken production farms,  
industrial kitchens where hygienic conditions and elasticity are significant  
(floor preventing physical fatigue).

## Advantages:

Provides a monolithic floor not requiring joint filling,  
Flexible, provides no physical fatigue,  
Resistant to high pressure and abrasion,  
Easy-to-apply, provides flat and  
smooth surface, long re-coating period.



Phone: +90 232 461 5713

[www.suffix.com.tr](http://www.suffix.com.tr)

[info@suffix.com.tr](mailto:info@suffix.com.tr)

Alkatsan Yapı Sanayi ve Ticaret Anonim Şirketi Kazım Dirik Mh. 375  
Sk. No:18 K.2 D.2 Piramit İş Merkezi Bornova/İZMİR



# SUFFIX PUR 2K TC SPORT MATT

*Aliphatic Polyurethane Top-Coat Matte-Finish Paint*



## Product Definition:

It is a polyurethane resin-based, two-component, flexible, colored floor coating material used as matte-finish top coating for sport field coating systems.

## Areas of Application:

Used as top-coat paint for indoor/outdoor sport fields.

Used as top-coat paint for all indoor and outdoor floor coating systems requiring matte and non-skid surface.

## Advantages:

Suitable for application by using an airless spray paint machines,

Resistant to diesel, fuel and many chemicals,

High wearing resistance,

Matte and anti-skid surface.

## Package:

15 kg set SUFFIX PUR 2K TC SPORT MATT;

Component A: 12 KG

Component B: 3 KG

## Consumption:

0.15 – 0.30 kg/m<sup>2</sup>

Consumption may vary depending on the system solution.



Phone: +90 232 461 5713

[www.suffix.com.tr](http://www.suffix.com.tr)

[info@suffix.com.tr](mailto:info@suffix.com.tr)

Alkatsan Yapı Sanayi ve Ticaret Anonim Şirketi Kazım Dirik Mh. 375  
Sk. No:18 K.2 D.2 Piramit İş Merkezi Bornova/İZMİR



# SUFFIX PUR ADHESIVE

*Polyurethane 2K Adhesive*



## Product Definition:

It is a polyurethane resin-based, two-component, polyurethane adhesive with high adhesive strength.

## Areas of Application:

Used in application and adhesion of artificial turf,  
Industrial rubber coatings,  
Insulation coatings,  
Adhesion of natural stone, ceramic, granite, marble and decorative bricks,  
Adhesion of PVC floor tiles,  
Adhesion of chipboard, melamine coated chipboard, styrofoam, polystyrene sheet, acoustic insulation,  
Adhesion of concrete, glasphalt, metal, wood, plastic, felt, cork and different products,  
Indoor and outdoor spaces, ship-boat construction.

## Advantages:

Solvent-free,  
Solid - flexible structure,  
High adhesive strength,  
Resistant to water, moist, heat,  
Perfectly adhesive to various surfaces.

## Package:

10 kg set SUFFIX PUR ADHESIVE;  
Component A: 9 KG  
Component B: 1 KG



Phone: +90 232 461 5713

[www.suffix.com.tr](http://www.suffix.com.tr)

[info@suffix.com.tr](mailto:info@suffix.com.tr)

Alkatsan Yapı Sanayi ve Ticaret Anonim Şirketi Kazım Dirik Mh. 375  
Sk. No:18 K.2 D.2 Piramit İş Merkezi Bornova/İZMİR



# SUFFIX PUR BINDER 1K

*Polyurethane Resin-Based Single-Component Rubber Binder*



## Product Definition:

It is a single-component, solvent-free, modified polyurethane resin-based binder which is cured with moisture in the air. It is used for adhesion of recycled rubber SBR granules and EPDM granules which are used in molding applications.

## Areas of Application:

Industrial rubber coatings,  
Rubber floor molding floors,  
Manufacturing of rubber tiles,  
Playground floors,  
Sport field grounds.

## Advantages:

Solvent-free,  
Very faint odor,  
Flexible,  
Ecologic (recycling of used, old rubbers)  
Fast curing in humid and hot weathers,  
Resistant to water,  
Excellent binding when it is mixed  
with proper rubber.

## Package:

NET: 25 kg BUCKET  
and 200 kg BARREL.



# SUFFIX ACR COURT

*Acrylic Latex Resin-Based Tennis Court  
Floor Coating Material*



## Product Definition:

It is a high quality, pure coating with 100% acrylic latex binder, a fine texture appearance that can be produced in custom colors upon request.

## Areas of Application:

Used in tennis court surfaces,  
Outdoor basketball courts,  
Topcoating product for running tracks made of rubber systems.

## Advantages:

Easy to apply.

It does not pose any fire hazard as it is solvent free.

Application with a rubber squeegee apparatus or a roller creates a very smooth, hard and tear resistant coating by ensuring homogeneous distribution down to the smallest spots of the floor.

## Package:

SUFFIX ACR-Q COURT ; 60 kg plastic package



Phone: +90 232 461 5713

[www.suffix.com.tr](http://www.suffix.com.tr)

[info@suffix.com.tr](mailto:info@suffix.com.tr)

Alkatsan Yapı Sanayi ve Ticaret Anonim Şirketi Kazım Dirik Mh. 375  
Sk. No:18 K.2 D.2 Piramit İş Merkezi Bornova/İZMİR



# SUFFIX ACR-Q COURT

*Acrylic Latex Resin-Based Tennis Court Floor Coating Material*



## Product Definition:

It is an acrylic resin based, high quality coating with a fine textured appearance, 100% acrylic latex binder, and filled with special granule metric fine 40-60 micron quartz to control the game speed, which can be produced in custom colors upon request.

## Areas of Application:

Used in tennis court surfaces,  
Outdoor basketball courts,  
Topcoating product for running tracks made of rubber systems.

## Advantages:

Easy to apply.

It does not pose any fire hazard as it is solvent free.

Application with a rubber squeegee apparatus or a roller creates a very smooth, hard and tear resistant coating by ensuring homogeneous distribution of quartz granules down to the smallest spots of the floor.

## Package:

SUFFIX ACR-Q COURT;  
60 kg plastic package



# SUFFIX PUR PORE FILLER

*Polyurethane Pore Filler*



## Product Definition:

It is a polyurethane resin-based, two-component, high volume, flexible, solvent-free filler paste.

## Areas of Application:

Used for sport fields made by laying on ground after turning granules into blanket or by molding instead of rubber granules,  
Providing impermeability,  
Filling of pores and holes,  
Making rubber blanket floor prepared for polyurethane self-levelling coating.

## Advantages:

Solvent-free,  
Flexible,  
Thixotropic and easy-to-apply.

## Package:

16 kg set SUFFIX PUR PORE FILLER;  
Component A: 14 KG  
Component B: 2 KG



Phone: +90 232 461 5713

[www.suffix.com.tr](http://www.suffix.com.tr)

[info@suffix.com.tr](mailto:info@suffix.com.tr)

Alkatsan Yapı Sanayi ve Ticaret Anonim Şirketi Kazım Dirik Mh. 375  
Sk. No:18 K.2 D.2 Piramit İş Merkezi Bornova/İZMİR





POLYURETHANE EPOXY MS POLYMER POLYUREA POLYURETHANE EPOXY MS  
POLYURETHANE EPOXY MS POLYMER POLYUREA POLYURETHANE EPOXY M



**+90 232 461 5713**

**info@suffix.com.tr**

**www.suffix.com.tr**

